

FTV-P Series**R32 Non Inverter
Wall Mounted****FTV-P Standard Non-Inverter**

Features



Powerful Mode

Once activated, this feature will engage the indoor fan motor to run at maximum speed for 20 minutes. The turbo airflow enables the desired temperature to be achieved faster, especially in larger spaces.



Gin-ION BLUE FILTER

This filter is treated with a positively charged silver ion, which efficiently draws viruses onto its surface and decomposes up to 99.9% in 2 hours. On top of that, this filter can deactivate bacteria and inhibit fungal growth on its surface to improve the quality of indoor air for a healthier lifestyle. The filter delivers consistent performance for around a year if filter is cleaned once every 2 weeks.

Substances can be collected and deactivate by filter:



Viruses



Bacteria



Allergen



Mould



Odour



Anti-Corrosion Treatment of Outdoor Heat Exchanger Fins

The outdoor unit's heat exchanger fins are processed using a special anti-corrosion treatment. The surface is covered with a thin acrylic resin layer to enhance the fins' resistance to salt corrosion.

Higher Corrosion Resistance Gold Fin is available (Optional).



GO DAIKIN

This built-in network adaptor (AWM61A01) and the app turn a smartphone into a remote controller that can be used inside or outside the home. Together, they help to not only save energy and maintain comfort but also eliminate any worries of forgetting to turn off your air conditioner! (Certain app functions are optional.)



Compact & Easy To Use Controller

- Prominent temperature display.
- Real-time clock display. (DGS01 only)
- Easily accessible buttons.
- Wired controller option - Wired Remote



DGS01



DSLM8



GO DAIKIN

GO DAIKIN

In-Home & Out-Of-Home Function
Allows You To Control Your AC
At Anywhere Anytime.

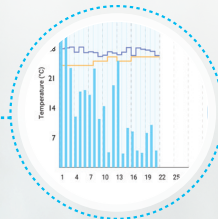


Scan the QR code to find out more!



GO CONVENIENCE

- In-home & Out-of-home function allows you to control your AC at anywhere anytime.
- Weekly scheduling allows you to set your AC at your preferred timing at a weekly basis.



GO SAVE

- Statistical energy usage graphs that allows you to monitor and keep track of your daily energy usage to ensure an efficient AC operation.
- With this, greater savings can be achieved as you can now smartly monitor your AC energy consumption!

* The energy consumption values are based on averaged data; Monetary values is calculated based on domestic tariff A at 21.8sen/kWh.



GO COMFORT

- Different operational modes allows you to enjoy the different kinds of cooling experience.
- Advance control* that provides you with even more cooling options for a better cooling comfort.

* May vary depends on model availability



GO SHARE

- User control sharing easily allows you to share your AC controls with your family members through a simple QR code scanning.
- You can unbind the controls or restrict certain app functions of the AC from your family members at any time you desire.

GO DAIKIN Configuration



Required for Operation:



Available At:



3 Simple Steps For Unit Pairing

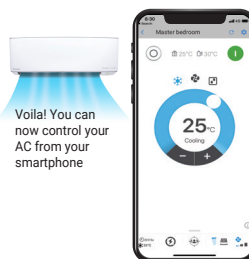
STEP 1



STEP 2



STEP 3



Scan QR code to see
GO DAIKIN setup video

ENJOY 2 YEARS **FREE***1 UPGRADE TO PRO ON US

Function List	Standard RM0.00	Pro RM11.99 Per year
Energy Usage Monitoring		✓
Weekly Scheduling		✓
Countdown Timer		✓
Out-Of-Home AC		✓
Geofencing *2 (NEW)		✓
Indoor/Outdoor Temperature Monitoring		✓
Standard Control Functions *3	✓	✓
User Control Sharing to Family & Friends	✓	✓
In-Home AC Control	✓	✓
Auto Error Code Detection	✓	✓
Voice control (Alexa, Google Home)	✓	✓

Smart Control Subscription:

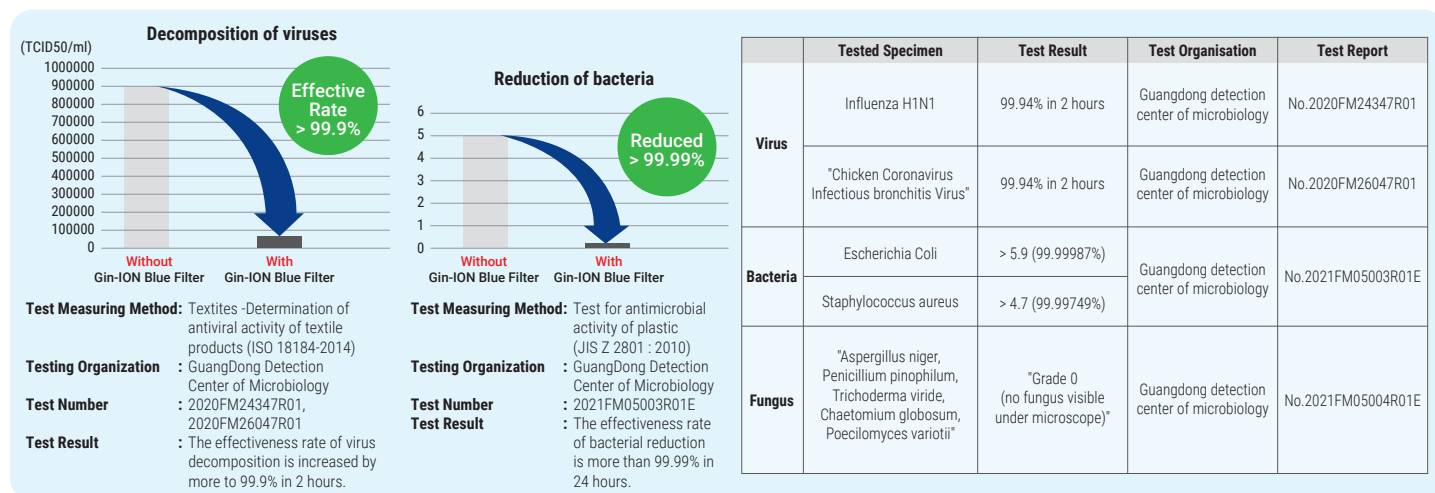
- Free 2 years upgrade to Smart Control Pro upon first time successful pairing to network adaptor (AWM61A01). Package will switch back to Smart Control Standard (FREE) after 2 years. User can choose to upgrade to Smart Control Pro with subscription of RM 11.99 yearly per air conditioner.
- Geofencing lets your AC automatically turn on when you get home and off when you leave. You can easily set and adjust the distance to match your needs.
- Function includes: On/Off, Operation Mode, Fan Swing, Fan Speed, Powerful Mode, Quiet Mode, Sleep Mode.

Go Daikin App:

- An Internet connection through mobile data or WiFi network is required to use Smart Control function.
- Connectivity of App to AC will depend on the effective coverage area of your Local Area Network (LAN).
- This device supports DHCP (Dynamic Host Configuration Protocol) only. Ensure that your router has DHCP server option function activated before pairing.
- The controllable functions and features may differ depending on the model.

Gin-ION Blue Filter Test Result

The Gin-ION Blue Filter has been tested and confirmed to decompose viruses, bacteria, and inhibit fungal growth on the filter surface.



Specification



FTV-P Series **R32**

Model name		Indoor unit	Wireless		FTV28PBV1MF9	FTV35PBV1MF9	FTV50PBV1MF	FTV60PBV1MF	FTV85PBV1MF
			Wired		FTV28PBV1MW9	FTV35PBV1MW9	FTV50PBV1MW	FTV60PBV1MW	FTV85PBV1MW
		Outdoor unit			RV28PBV1M9	RV35PBV1M9	RV50PBV1M	RV60PBV1M	RC85BV1M
Rated Cooling Capacity			Btu/h	9,500	12,000	18,000	22,500	30,000	
			kW	2.78	3.52	5.28	6.59	8.79	
Power Consumption			W	865	1,040	1,660	2,130	2,900	
Nominal Running Current			A	3.86	4.61	7.38	9.52	13.10	
CSPF			Wh/Wh	3.42	3.59	3.37	3.28	3.22	
Indoor	Air Flow Rate		cfm	342	355	531	614	931	
	Sound Pressure Level (H//M/L/Q)		dBA	37 / 33 / 27 / 25	39 / 35 / 29 / 28	42 / 39 / 36 / 35	46 / 43 / 39 / 37	51 / 46 / 42 / 39	
	Dimension (H x W x D)		mm	288 x 800 x 212			310 x 1,065 x 228		310 x 1,289 x 240
	Unit Weight		kg	9.0			14.0		16.0
Outdoor	Sound Pressure Level		dBA	46	48	52	52	54	
	Dimension (H x W x D)		mm	550 x 658 x 273			615 x 845 x 300		695 x 930 x 350
	Unit Weight		kg	28	28	40	46	53	
	Piping Connection Size	Liquid	mm	ø6.35				ø9.52	
		Gas	mm	ø9.52			ø12.70		ø15.88
	Maximum Pipe Length		m	25			30		50
	Maximum Pipe Elevation		m	15			15		30
	Coil Type			Hydrophillic Blue Fin					
Power Supply				220-240 V/1ph/50Hz (Power to Indoor)					
Heat Insulation				Both Liquid and Gas Piping					
Energy Rating				3 Star				-	

Remarks:

- Due to product innovation, all specifications are subjected to change by the manufacturer without prior notice.
- All units are being tested and comply to ISO5151.
- Nominal cooling capacity are based on the conditions: 27°C DB / 19°C WB indoor and 35°C DB outdoor.
- Sound pressure levels are measured in anechoic chamber according to JIS C 9612 standard. During actual operation, sound pressure level will be higher as a result of room specification condition.
- The Gin-ION Blue Filter is not a medical device. Benefits shown are only effective for substances which are directly attached on the filter surface.
- Wireless model will be supplemented with a Wireless Remote Controller and a built-in network adaptor (AWM61A01).
- Wired model will come with only a Wired Remote Controller (DSLMB8). To enable the Smart Control function, optional NS Splitter (R50044157819) is required.

DAIKIN MALAYSIA SALES & SERVICE SDN. BHD.

Call Centre: 1300-88-DAIKIN(324546)

198301014326 (109719-M)

Email: customer_service@daikin.com.my

Branches:

• Kedah	Tel: 04-730 5670	• Johor	Tel: 07-557 7788
• Penang	Tel: 04-331 1670	• Pahang	Tel: 09-567 6778
• Perak	Tel: 05-548 2307	• Kelantan	Tel: 09-747 4578
• Negeri Sembilan	Tel: 06-768 8969	• Sabah	Tel: 088-722 194
• Melaka	Tel: 06-288 1133	• Sarawak	Tel: 082-333 299

Website: www.daikin.com.my

Authorized dealer: