

# *Office Home*



The Reiri logo icon, which is a blue square containing a stylized building and a Wi-Fi symbol.**Reiri**  
OFFICE & HOME



# PERFECTING THE AIR

The world contains an infinite number of spaces. Everyday we breathe in 10,000 litres of air. It nourishes us. It enriches us. Daikin believes that every breath we take in these spaces should be 'perfect'.

At Daikin, we've been 'perfecting the air' for over 90 years to make your home a calm and comfortable place – for you and your family.

As 'Air Specialists', Daikin is driven to improve all aspects of indoor air quality - from temperature and humidity, to flow and cleanliness.



*“Does it  
do what  
a Daikin  
does?”*

## CONTENTS

<b>BENEFITS OF REIRI</b>	<b>4</b>
<b>CONNECTABLE DEVICES</b>	<b>5</b>
<b>ENERGY SAVING</b>	<b>6</b>
<b>ENERGY AND COST MANAGEMENT</b>	<b>10</b>
<b>INTEGRATION CAPABILITIES</b>	<b>12</b>
<b>REIRI FOR OFFICE</b>	<b>14</b>
▶ TOUCHSCREEN CONTROLLER	<b>19</b>
▶ CONTROLLER EXTENSION	<b>22</b>
▶ MULTISITE EXTENSION	<b>24</b>
<b>REIRI FOR HOME</b>	<b>27</b>
▶ LITE VERSION	<b>32</b>



# BENEFITS OF REIRI

## **Energy Saving**

By automating air-conditioning and lighting controls through available functions such as Scheduling and Interlocking, energy consumption is greatly minimized while maximising comfort and efficiency.

## **Energy and Cost Management**

Easily monitor and analyse energy consumption with data trend graphs, reports and even real-time energy monitoring display. Tenant billing management is also available for effective cost management.

## **Integration Capabilities**

Reiri is able to integrate and connect to various sensors and smart devices, thus making it the ideal all-in-one platform to monitor and control every room's indoor environment, such as temperature, humidity, indoor air quality and illuminance.

# CONNECTABLE DEVICES

Various types of equipment in a building can be controlled by a single controller.



## Individual Air-conditioning Control

From VRV to SkyAir to Split Units,  
conveniently manage all air-conditioning  
needs with flexible and precise control when  
connected to Reiri.



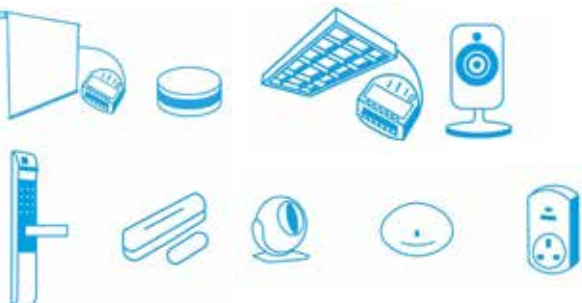
### Lighting Control (DALI Compatible)

Monitor and control DALI-compatible LED lighting systems from a single controller, with enhanced automation through interlocking functions with air-conditioners and other connectable devices.



## Smart Devices

Connect to a wide variety of smart devices, ranging from IP cameras to locks and sensors, and access all of them from just one Reiri app.



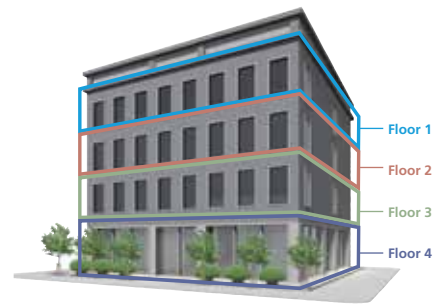
# ENERGY SAVING

## SCHEDULING

The requirements for every air-conditioning system greatly depend on each building, especially if there are different tenants occupying the same building. With so many different requirements due to different tenants' operating hours and preferences, it would be difficult to manage the operations of every lighting and air-conditioning unit.

Reiri has a Scheduling function that is ideal for home and building owners to manage their systems effectively. With this function, users can programme desired devices to automatically operate according to specific operation days, time and setpoints. This automation control provides great convenience and improves energy savings.

For example, different floors of the same building would have different operating hours due to different occupants. With Reiri's Scheduling function, the different operating hours are saved and various utilities and devices will be automatically switched on/off accordingly throughout the week. This eliminates energy wastage and allows greater convenience to building owners and facility managers.



### Floor 1

**Working days:** Mon - Fri  
**Working hours:** 09:00 - 17:30  
**Setpoint:** 24°C.



### Floor 2

**Working days:** Mon - Fri  
**Working hours:** 08:00 - 17:00  
**Setpoint:** 22°C.



### Floor 3

**Working days:** Mon - Sat  
**Working hours:** 08:00 - 19:00  
**Setpoint:** 25°C.



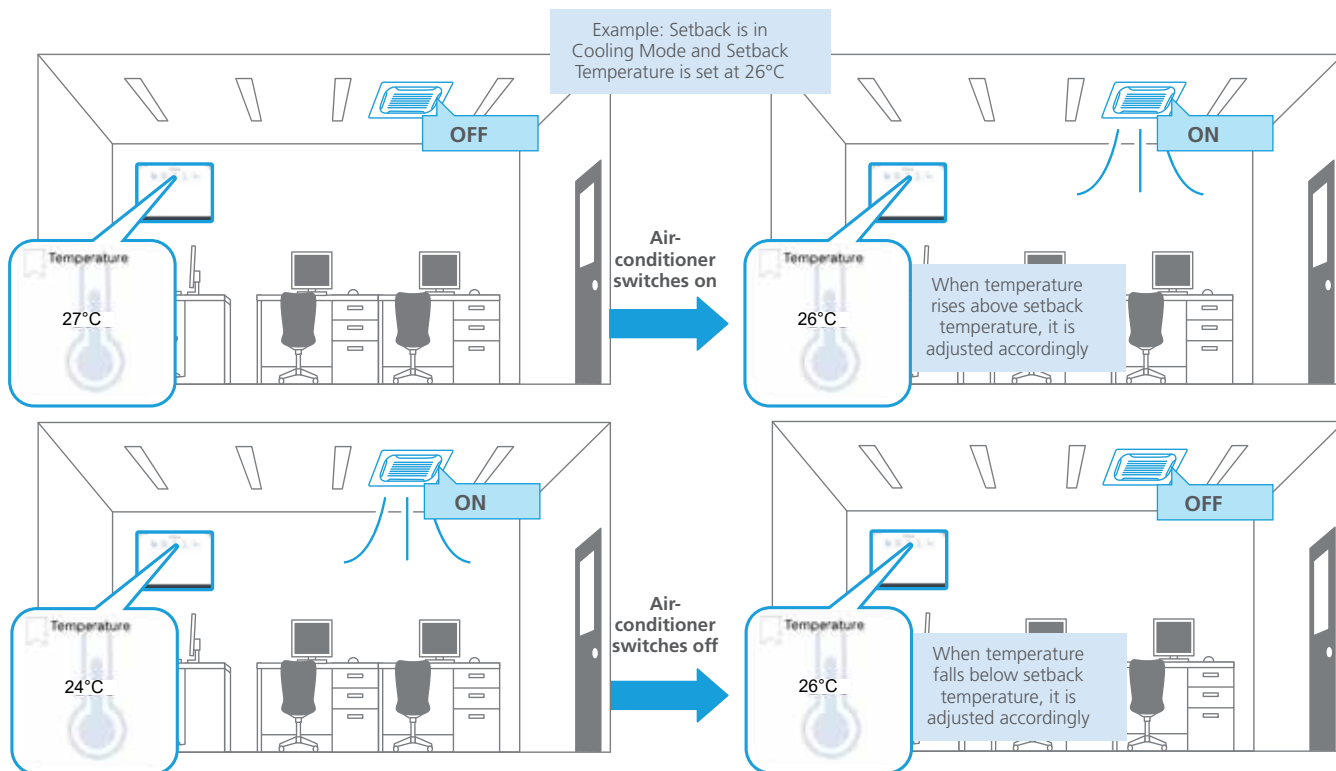
### Floor 4

**Working days:** Mon - Sun  
**Working hours:** 07:00 - 23:00  
**Setpoint:** 25°C.



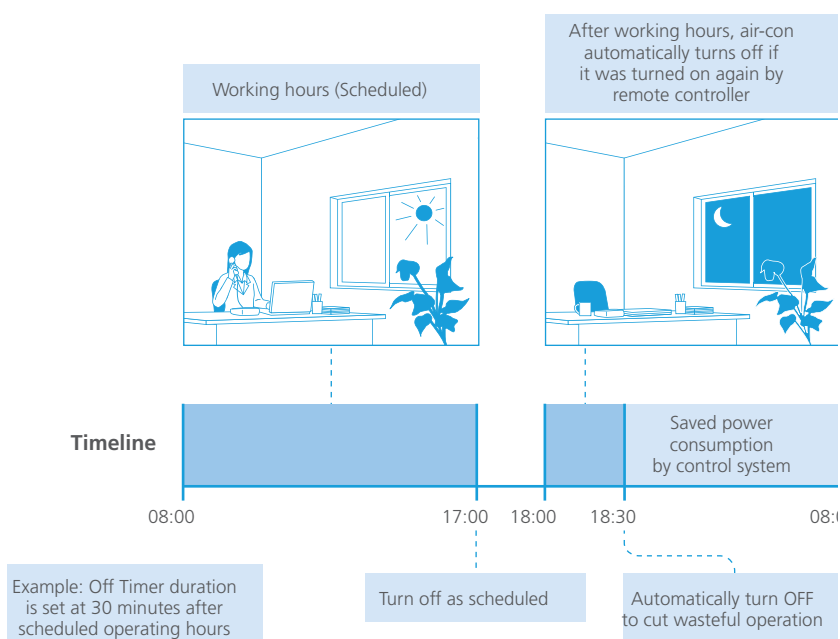
## SETBACK

The Setback function allows users to set their preferred room temperature and enables the air-conditioner to automatically switch on or off to maintain the desired room temperature when no one is in the room. This automatic control conserves energy without compromising on comfort.



## OFF TIMER

The Off Timer function enables air-conditioners to switch off automatically after a set period of time, hence giving users a peace of mind. For example, the Off Timer can be activated after office hours to ensure that the air-conditioner will be automatically switched off in the event that someone switches it on again via the remote controller after scheduled operating hours. If the Off Timer duration is set at 30 minutes, the air conditioner will automatically switch off after 30 minutes of being on. This greatly helps to prevent energy wastage.



# AUTOMATIC CHANGEOVER

When automatic changeover is enabled, cooling and heating operations of each room will automatically be changed based on setpoint and room temperature. This function operates a group of indoor units to change cooling/heating mode automatically at the same time and can register up to 40 groups. In the case of heat pump/heat recovery VRV, the group will consist of all indoor units of the VRV system.

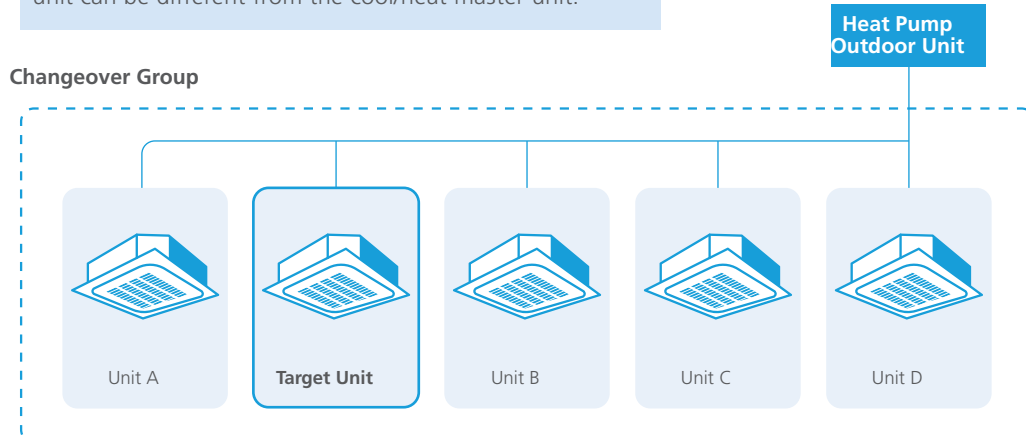
Generally, if room temperature is above cool setpoint and indoor units are in

heating mode, operation mode will be automatically changed to cooling mode. If room temperature is below heat setpoint and indoor units are in cooling mode, operation mode will be automatically changed to heating mode.

There is also a Guard Timer function which prevents the automatic changeover from activating too frequently in case the room temperature keeps fluctuating above and below the setpoint.

## Fix Mode

For Fix mode, a fixed target indoor unit's setpoint and room temperature is used to decide cooling/heating mode change for all other units. This fixed target indoor unit can be different from the cool/heat master unit.



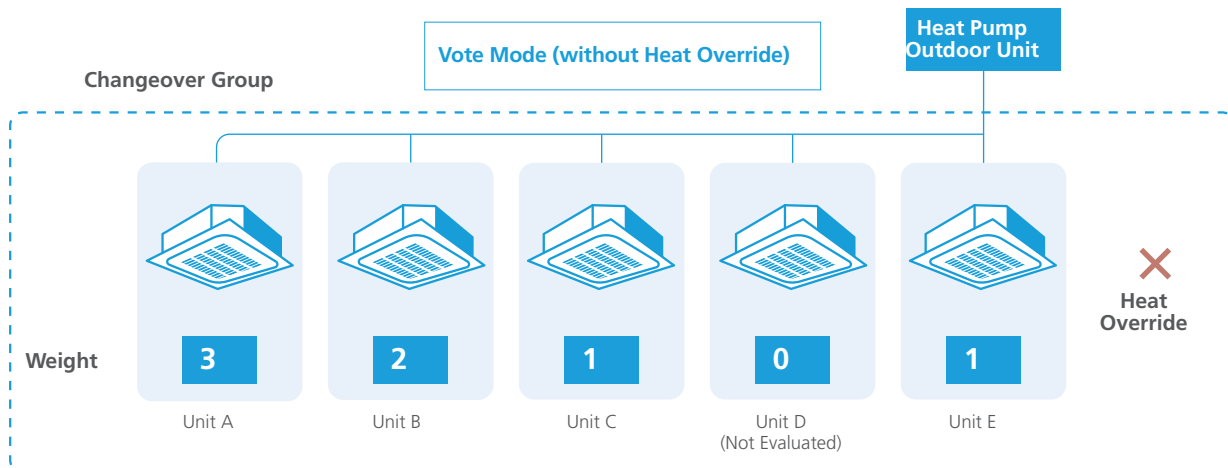
## Example: Residential Application



- During the day, the air-conditioning units in a household are in cooling mode.
- At night, the environment becomes cooler and temperature falls.
- When the room temperature falls below the heat setpoint temperature of the target unit, cooling mode is automatically changed to heating mode.
- The rest of the units in the other rooms will also automatically change to heating mode, following the target unit.

### Vote Mode

For Vote mode, each indoor unit in a group will be assigned weight (from 0 to 3) which will then be used to decide cool/heat change based on each unit's setpoint and room temperature. This mode also includes a Heat Override function.



Example: Residential Application



- In Vote Mode, there is no target unit to 'follow'.
- The higher the weight, the more likely the air-conditioning unit will affect the automatic changeover outcome.
- The weights and the differences between room and setpoint temperatures will be taken into consideration for the heating/cooling mode changeover.
- For example, Units A and B require cooling while Units C and E require heating. However, as Units A and B have higher weightage, all units will automatically change to cooling mode instead.
- When Heat Override is switched on, the air-conditioning units will automatically change to heating mode regardless of the weighted outcome.

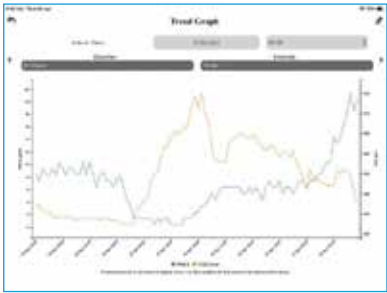
# ENERGY AND COST MANAGEMENT

## DATA AND TREND VISUALIZATION

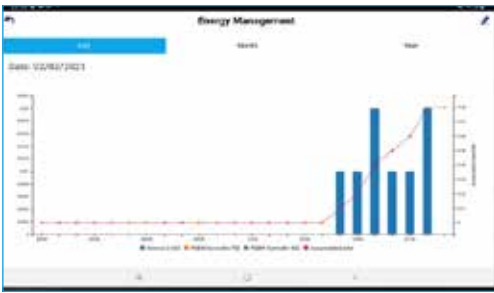
Energy and water consumption data will be captured and displayed in user-friendly graphs. Users are able to select desired devices and parameters to monitor energy and water consumption and ensure effective energy management.

In addition, indoor air quality can also be monitored via trend graphs for indoor environmental changes such as humidity, CO2 and PM2.5 levels.

Trend Graph



Energy Management



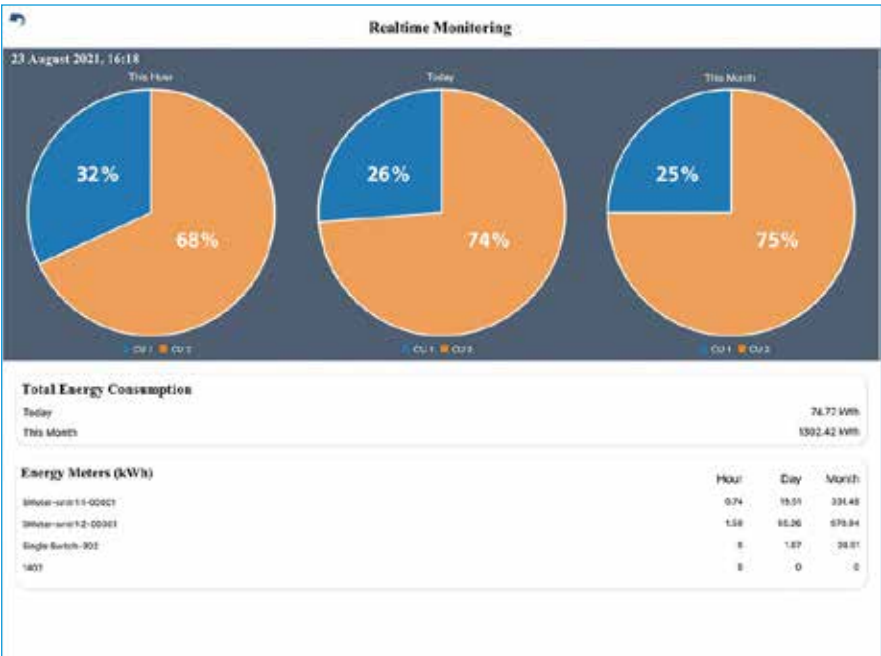
Water Management



## REAL TIME ENERGY DISPLAY

Users can monitor energy and water consumption in realtime and take necessary precautions swiftly, hence enhancing effective energy management.

Total Energy Consumption



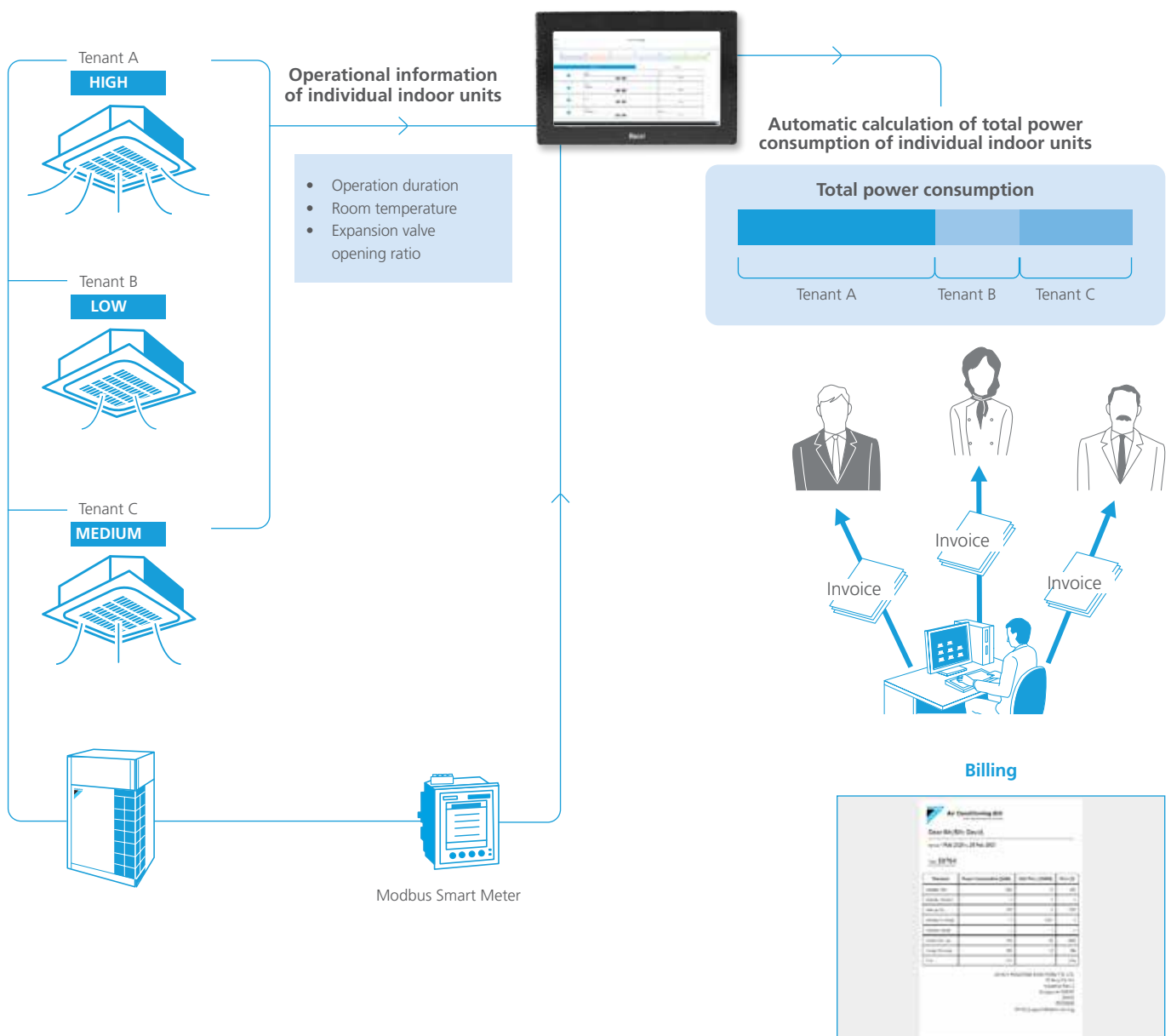
# POWER PROPORTIONAL DISTRIBUTION (PPD) AND PPD BILLING

The PPD function accurately calculates indoor unit power consumption from outdoor unit power consumption divided by each indoor unit's operation information. This data is utilised to calculate air-conditioning usage fees for respective tenants in a building and is also useful for energy management. Building owners are also able to configure price settings for different timings accordingly.

As such, this function is able to keep track of power distribution for each indoor unit and perform air-conditioning billing calculations swiftly and automatically.

## It is easy to export PPD data.

PPD data can be exported in CSV format to any PC to be easily managed and analysed.



# INTEGRATION CAPABILITIES

## CONNECT WITH MODBUS, Z-WAVE DEVICES AND VOICE COMMAND

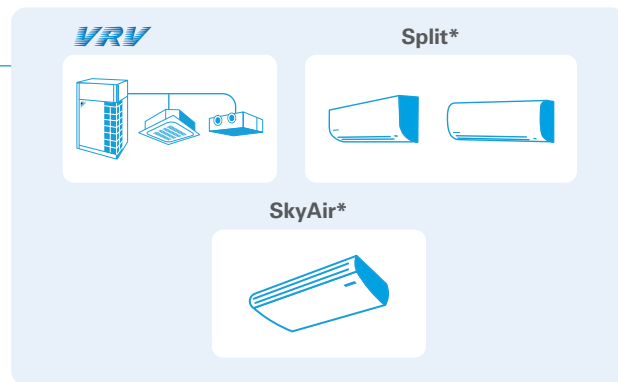
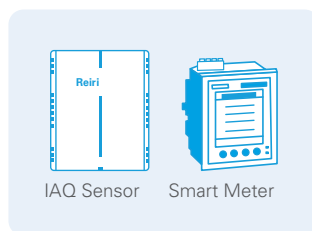
Energy and water consumption data will be captured and displayed in user-friendly graphs. Users are able to select desired devices and parameters to monitor energy and water consumption and ensure effective energy management.

In addition, indoor air quality can also be monitored via trend graphs for indoor environmental changes such as humidity, CO2 and PM2.5 levels.

**Reiri for Office /  
Reiri for Office (Touchscreen Controller) /  
Reiri for Home**

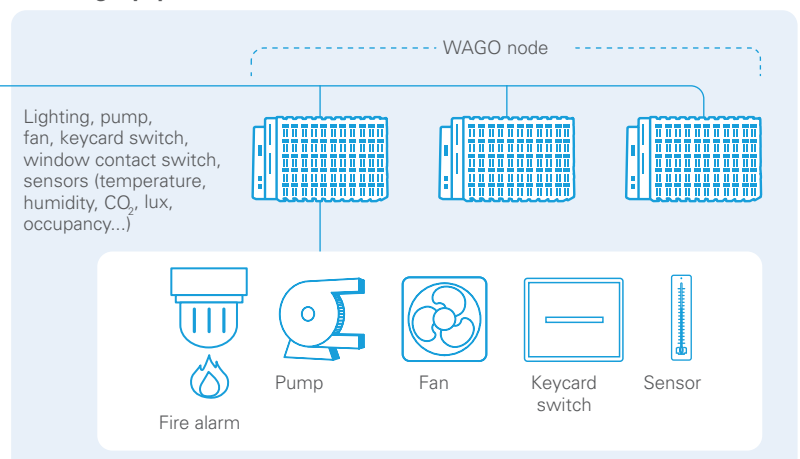


### Modbus Devices



\*Additional Interface Adaptors may be required

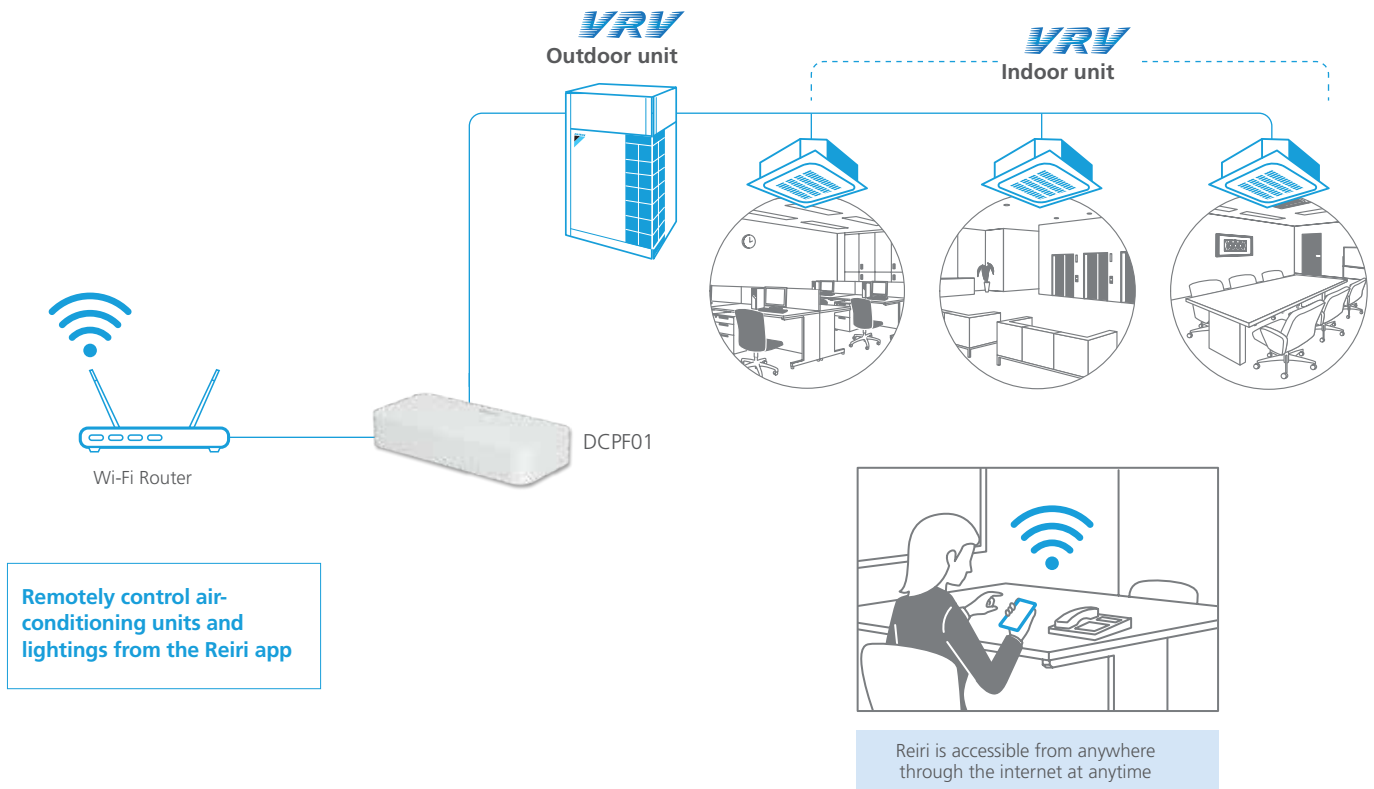
### Building equipment with WAGO



## CONTROL EVERYTHING FROM JUST ONE REIRI APP

Users can monitor and control all connected air-conditioners and smart devices from the Reiri app on their smartphones, tablets or PCs as long as there is internet connection.

With everything conveniently accessible from a single app, users can enjoy greater convenience and energy savings.



## COMPLIANT WITH CYBER-SECURITY STANDARD (EN303645)

Reiri has achieved the EN 303 645 certification, which guarantees a safe and reliable platform for users regardless of location.

Privacy and security are of the utmost importance and all data will be securely stored accordingly.



## **Reiri** for Office

**A simple office building solution with a secured, cloud-enabled platform, allowing greater ease of control and comfort while being energy efficient.**

**Reiri for Office** is the ideal building management solution for all sizes of commercial buildings, especially for small to medium-sized buildings, regardless of location.

This smart building solution provides affordable and scalable building control and energy management, allowing users greater control and automation of building utilities such as air-conditioning and lighting, and to monitor and manage energy performance and indoor air quality.

### PRODUCT LINE-UP



**FLAGSHIP MODEL  
REIRI FOR OFFICE  
TOUCHSCREEN  
CONTROLLER**

DCPF04



**REIRI FOR OFFICE  
CONTROLLER  
EXTENSION**

DCPF01



**REIRI FOR OFFICE  
MULTISITE  
EXTENSION**

DCPF05



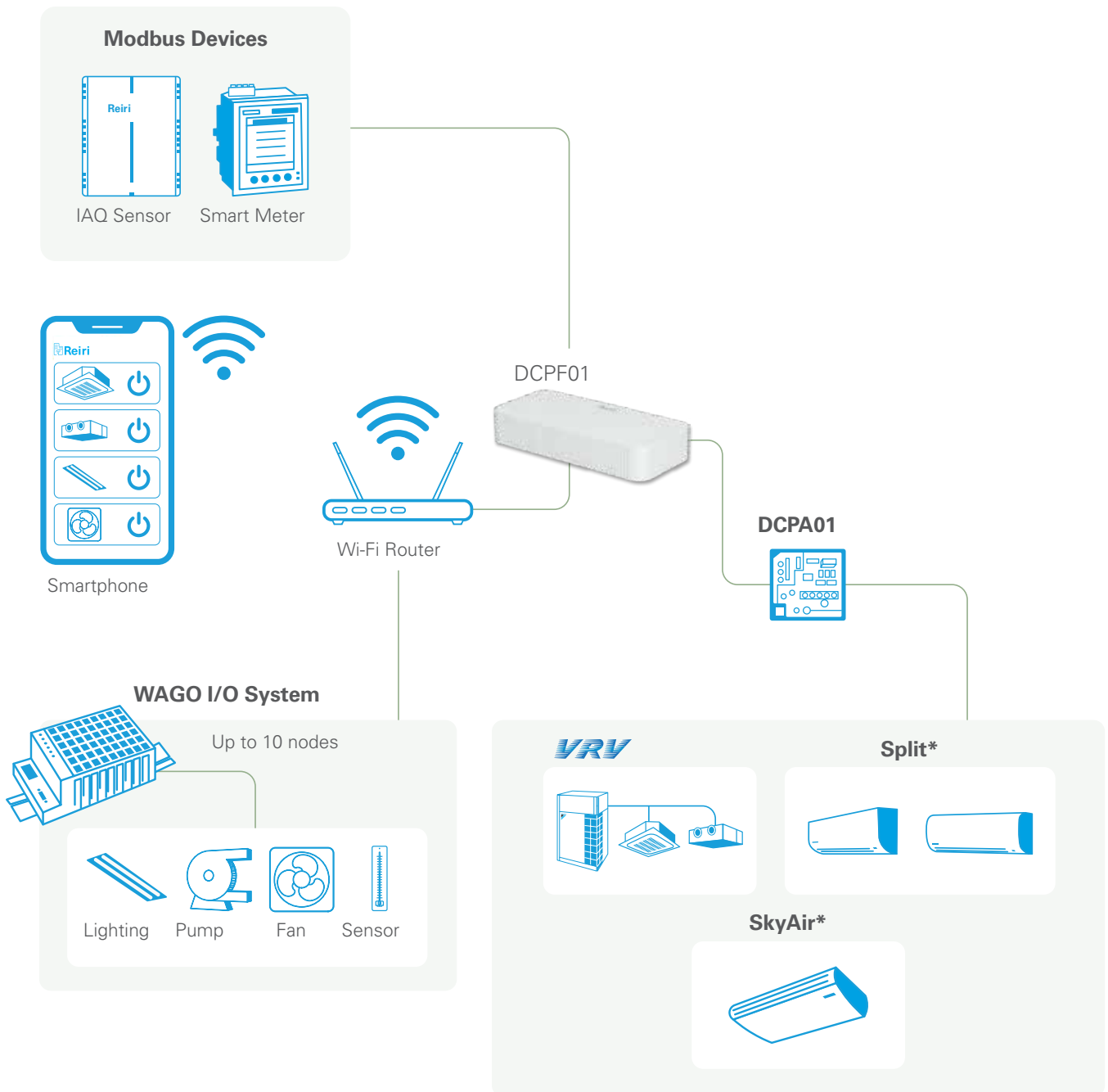
**REIRI FOR OFFICE  
MULTISITE  
EXTENSION**

DCPF10

**EXPANDED  
FEATURES**

## FEATURES & BENEFITS

- Energy Management
- IEQ Management
- Mobile Control of Air-conditioning Units
- Automatic Control
- Scalability
- User-friendly App Interface
- Complete control of all connected devices
- Easy installation and configuration
- Push Notification
- Compliant with Cyber-security standard (EN303645)



Category	Functions		Description
Monitoring and Control Functions	Management points		Maximum number of management point: 500
	Groups		Maximum number of groups: 100
	Monitoring Screen	Icon View	Icons show the operation status of equipment
		Layout View	Maximum 50 screen can be registered; Background image size should be less than 512kB
	Remote Control Prohibition		Individually prohibit operation of each local remote-control function
	Setpoint Range Limitation		To limit setpoint range for each indoor unit management point
Automation Control Functions	Automatic changeover		Number of changeover groups: 100
	Off Timer		Off timer duration can set from 5min to 120min with every 5min interval
	Setback		Setback setpoint can be selected within 24-35°C in cooling mode and 5-20°C in heating mode.
	Scene		Number of programmes: 100 Up to 20 actions can be registered per pattern.
	Schedule	Number of programmes: 100 Up to 20 actions can be registered per pattern.	
		Weekly Schedule	Up to 300 patterns (including yearly calendar) can be set
		Yearly Calendar	A pattern set as calendar has high priority than a pattern which is set as day of a week.
	Interlock		Number of programmes: 100 Up to 10 management points can be registered as activation condition. The delay timer of execution condition can be set within 0-120 mins after the activation conditions are satisfied.
Data Management	History		Management point operation, management point status change, management point error/alert message, function execution and system information are recorded for one year.
	Report*		Operation data (latest information and operation report) and error report on daily/monthly basis.
	Trend Graph*		Chart on the environmental changes (e.g. Temperature, Humidity or CO <sub>2</sub> levels) along different points of intervals (6h/12h/24h/48h/7 days/specific period within 7 days).
	Energy Graph*		Bar chart on energy and other meter value, up to 4 energy categories excluding the recycled category.
	Real Time Energy Display		Daily/Monthly real time energy consumption status on screen.
Multi-tenant Management†	Power Proportional Distribution (P.P.D.)*		Power Proportional Distribution results available at 60 min interval. Power consumption data for cooling and heating mode are available.
	P.P.D. Billing		Generate Bill for individual tenants by using P.P.D. data, up to 256 tenants with maximum 256 indoor units registered under each tenant. Number of electricity price variation in a day: 5 time zones can be set with different currency. The system supports data output in CSV format, and printout function.
System Setting	Account Management		Access through mobile application/ Web browser. Up to 80 accounts (Admin and User account) can be registered. Screens and operation accessible to general users can be restricted by admin account
	Security		LAN communication: AES-128-CBC with RSA 2048 Internet communication: TLS 1.2 Account password storage: SHA256 hashing and AES-128-CBC together with other account information Device login password storage: AES-128-CBC
	Supported languages		English, Spanish, Portuguese, Simplified Chinese, Traditional Chinese, Vietnamese, Bahasa (Indonesia), Thai
	Notification		Push notification in cases: 1) Error/alert detected 2) Specified management point started 3) Version update messages
	Email Alert		Malfunction Alert will be sent to preset email account

\*The system supports data output in CSV format.

†Smart Meter required.

### A/C CONNECTION HARDWARE

Type	Model	Item	Remarks
Controller	DCPF05	Reiri for Office (Controller Extension)	Expansion Controller
	DCPF10	Reiri for Office (Multisite Extension)	Multi-site controller
A/C Connection Interface Adaptor	DCPA01	Adaptor for Reiri	Up to 64 indoor units can be managed
	BRP072C42	Daikin Mobile Controller Adaptor (for RA units)	For individual RA Indoor Unit
	BRP072C42-1	Daikin Mobile Controller Adaptor (for SA units)	For individual SA Indoor unit
VRV / SkyAir Connection Interface Adaptor	DTA102A52	Interface adaptor for VRV	For individual VRV Indoor Unit
	DTA112BA51	Interface adaptor for SkyAir	For individual SkyAir Indoor Unit
Residential Unit Connection Interface Adaptor	KRP928BB2S	Interface Adaptor for residential indoor unit	For individual Indoor Unit
Rooftop Unit Connection Interface Adaptor	DTA107A55	Central control adaptor kit	For UAYQ
DIIIIDio Connection (ITM)	DEC102A51	Dio Unit	4 ports: use for connection with the equipment of the other companies
DIIIIDo Connection (ITM)	DEC101A51	Di Unit	8 ports: use for connection with the equipment of the other companies

### OPTIONAL SOFTWARE

Type	Model	Item	Remarks
Controller Software	DCPN001	Commercial Automatic Control	Set back, Scene, Interlock Automatic Changeover functions for individual controller
	DCPN002	Commercial Data Analytics	Operation Report, Error Report; Trend Graph, Energy Graph functions for individual controller
	DCPN003	P.P.D. & Tenant Billing Management	Power Proportional Distribution and billing function for individual controller
	DCPN004	Real-time Energy Monitoring (R.E.M.)	Real Time Energy Display function for individual controller
	DCPN008	iTM Tenant Billing Management	Billing function for iTM Power Proportional Distribution data

\*Smart Meter required.

### OPTIONAL HARDWARE

Type	Model	Item	Specification
IAQ Sensor for Reiri	DCPE02S	IAQ Sensor DC	Detecting PM2.5, CO, VOC, temp. & RH, Modbus RS485 interface (24VAC/VDC power supply)

### LOCALLY PROCURED MODULES

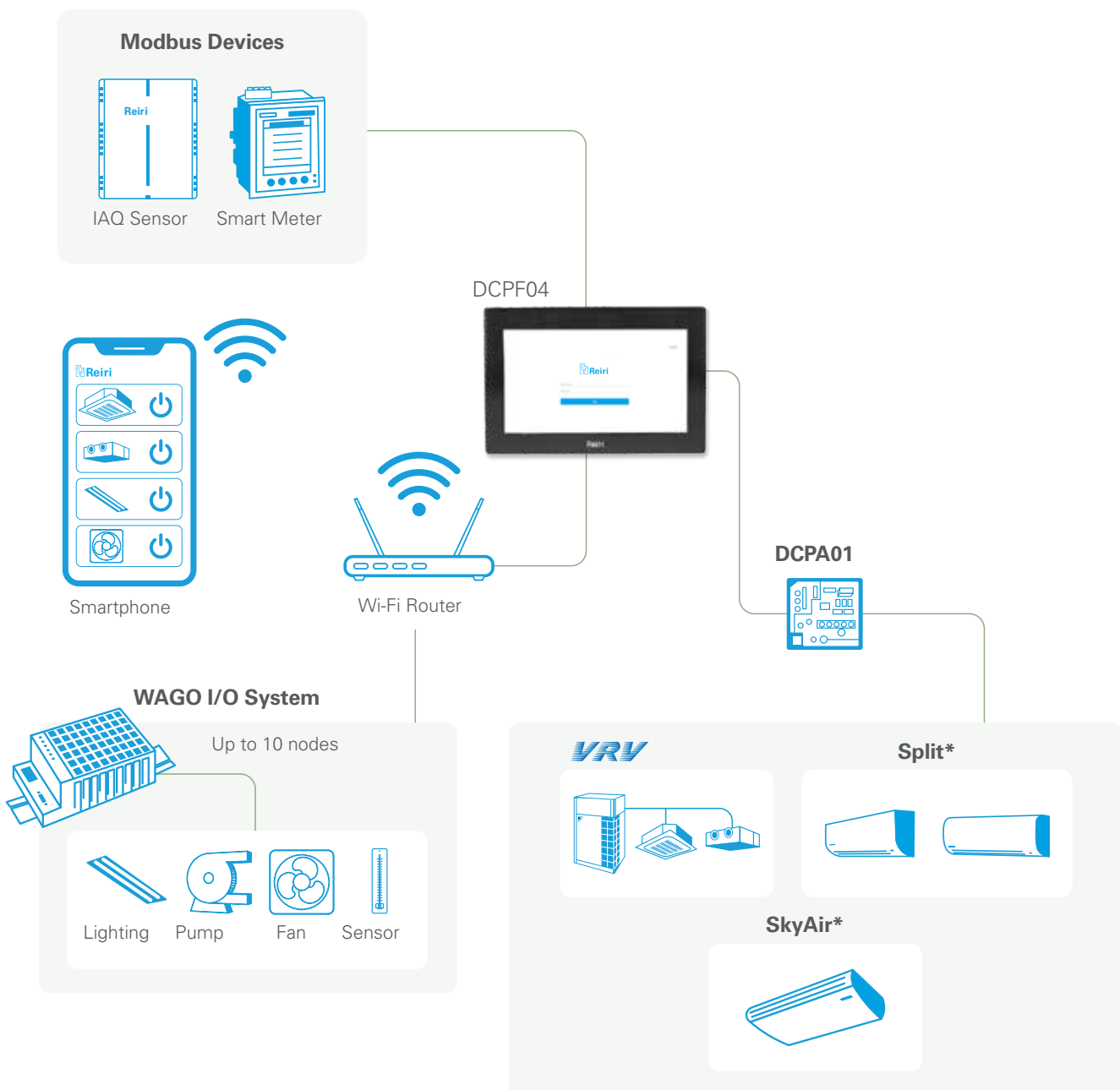
Type	Specification
WAGO I/O System	<p><b>Supported communication modules:</b> 750-362 750-862: for DALI module, Power measurement module</p> <p><b>System modules:</b> 750-600; 750-601; 750-602; 750-613; 753-620 (for DALI module)</p> <p><b>Supported IO modules:</b> Di: 750-400,430,432,436,1405 Do: 750-504, 513, 513/000-001, 1504 Ai: 750-454,455,459,479,460,460/000-003,460/000-005,461,461/000-003,461/000-004,461/000-005,461/020-000 Ao: 750-554,555,559,560 Pulse counter module*: 750-638 DALI: 753-647 Power measurement: 750-495</p> <p><b>Power supply:</b> 787-712; 787-1112</p> <p>*Use with 750-362 only. Not applicable with 750-862</p>
Modbus Smart Meter	Schneider PM5300 / PM5110 / PM5500 / iEM3100 / iEM3200 series

# TOUCHSCREEN CONTROLLER

A simple office building solution with a secured, cloud-enabled platform and a dedicated touch panel.

## FEATURES & BENEFITS

- Energy Management
- IEQ Management
- Mobile Control of Air-conditioning Units
- Automatic Control
- Scalability
- User-friendly App Interface
- Complete control of all connected devices
- Easy installation and configuration
- Push Notification
- Compliant with Cyber-security standard (EN303645)



\*Additional Interface Adaptors may be required

Category	Functions		Description
Monitoring and Control Functions	Management points		Maximum number of management point: 500
	Groups		Maximum number of groups: 100
	Monitoring Screen	Icon View	Icons show the operation status of equipment
		Layout View	Maximum 50 screen can be registered; Background image size should be less than 512kB
	Remote Control Prohibition		Individually prohibit operation of each local remote-control function
	Setpoint Range Limitation		To limit setpoint range for each indoor unit management point
Automation Control Functions	Automatic changeover		Number of changeover groups: 100
	Off Timer		Off timer duration can set from 5min to 120min with every 5min interval
	Setback		Setback setpoint can be selected within 24-35°C in cooling mode and 5-20°C in heating mode.
	Scene		Number of programmes: 100 Up to 20 actions can be registered per pattern.
	Schedule	Number of programmes: 100 Up to 20 actions can be registered per pattern.	
		Weekly Schedule	Up to 300 patterns (including yearly calendar) can be set.
		Yearly Calendar	A pattern set as calendar has high priority than a pattern which is set as day of a week.
	Interlock		Number of programmes: 100 Up to 10 management points can be registered as activation condition. The delay timer of execution condition can be set within 0-120 mins after the activation conditions are satisfied.
Data Management	History		Management point operation, management point status change, management point error/alert message, function execution and system information are recorded for one year.
	Report*		Operation data (latest information and operation report) and error report on daily/monthly basis.
	Trend Graph*		Chart on the environmental changes (e.g. Temperature, Humidity or CO <sub>2</sub> levels) along different points of intervals (6h/12h/24h/48h/7 days/specific period within 7 days)
	Energy Graph*		Bar chart on energy and other meter value, up to 4 energy categories excluding the recycled category.
	Real Time Energy Display		Daily/Monthly real time energy consumption status on screen.
Multi-tenant Management	Power Proportional Distribution (P.P.D.)*		Power Proportional Distribution results available at 60 min interval. Power consumption data for cooling and heating mode are available.
	P.P.D. Billing		Generate Bill for individual tenants by using P.P.D. data, up to 256 tenants with maximum 256 indoor units registered under each tenant. Number of electricity price variation in a day: 5 time zones can be set with different currency. The system supports data output in CSV format, and printout function.
System Setting	Account Management		Access through mobile application/ Web browser. Up to 80 accounts (Admin and User account) can be registered. Screens and operation accessible to general users can be restricted by admin account
	Security		LAN communication: AES-128-CBC with RSA 2048 Internet communication: TLS 1.2 Account password storage: SHA256 hashing and AES-128-CBC together with other account information Device login password storage: AES-128-CBC
	Supported languages		English, Spanish, Portuguese, Simplified Chinese, Traditional Chinese, Vietnamese, Bahasa (Indonesia), Thai
	Notification		Push notification in cases: 1) Error/alert detected 2) Specified management point started 3) Version update messages
	Email Alert		Malfunction Alert will be sent to preset email account

\*The system supports data output in CSV format.

^Smart Meter required.

### A/C CONNECTION HARDWARE

Type	Model	Item	Remarks
Controller	DCPF10	Reiri for Office (Multisite Extension)	Multi-site controller
A/C Connection Interface Adaptor	DCPA01	Adaptor for Reiri	Up to 64 indoor units can be managed
	BRP072C42	Daikin Mobile Controller Adaptor (for RA units)	For individual RA Indoor Unit
	BRP072C42-1	Daikin Mobile Controller Adaptor (for SA units)	For individual SA Indoor unit
VRV / SkyAir Connection Interface Adaptor	DTA102A52	Interface adaptor for VRV	For individual VRV Indoor Unit
	DTA112BA51	Interface adaptor for SkyAir	For individual SkyAir Indoor Unit
Residential Unit Connection Interface Adaptor	KRP928BB2S	Interface Adaptor for residential indoor unit	For individual Indoor Unit
Rooftop Unit Connection Interface Adaptor	DTA107A55	Central control adaptor kit	For UAYQ
DIIIIDio Connection (ITM)	DEC102A51	Dio Unit	4 ports: use for connection with the equipment of the other companies
DIIIIDo Connection (ITM)	DEC101A51	Di Unit	8 ports: use for connection with the equipment of the other companies

### OPTIONAL HARDWARE

Type	Model	Item	Specification
IAQ Sensor for Reiri	DCPE02S	IAQ Sensor DC	Detecting PM2.5, CO, VOC, temp. & RH, Modbus RS485 interface (24VAC/VDC power supply)

### OPTIONAL SOFTWARE

Type	Model	Item	Remarks
Controller Software	DCPN003 <sup>*</sup>	P.P.D. & Tenant Billing Management	Power Proportional Distribution and billing function for individual controller
	DCPN004	Real-time Energy Monitoring (R.E.M.)	Real Time Energy Display function for individual controller

<sup>\*</sup>Smart Meter required.

### LOCALLY PROCURED MODULES

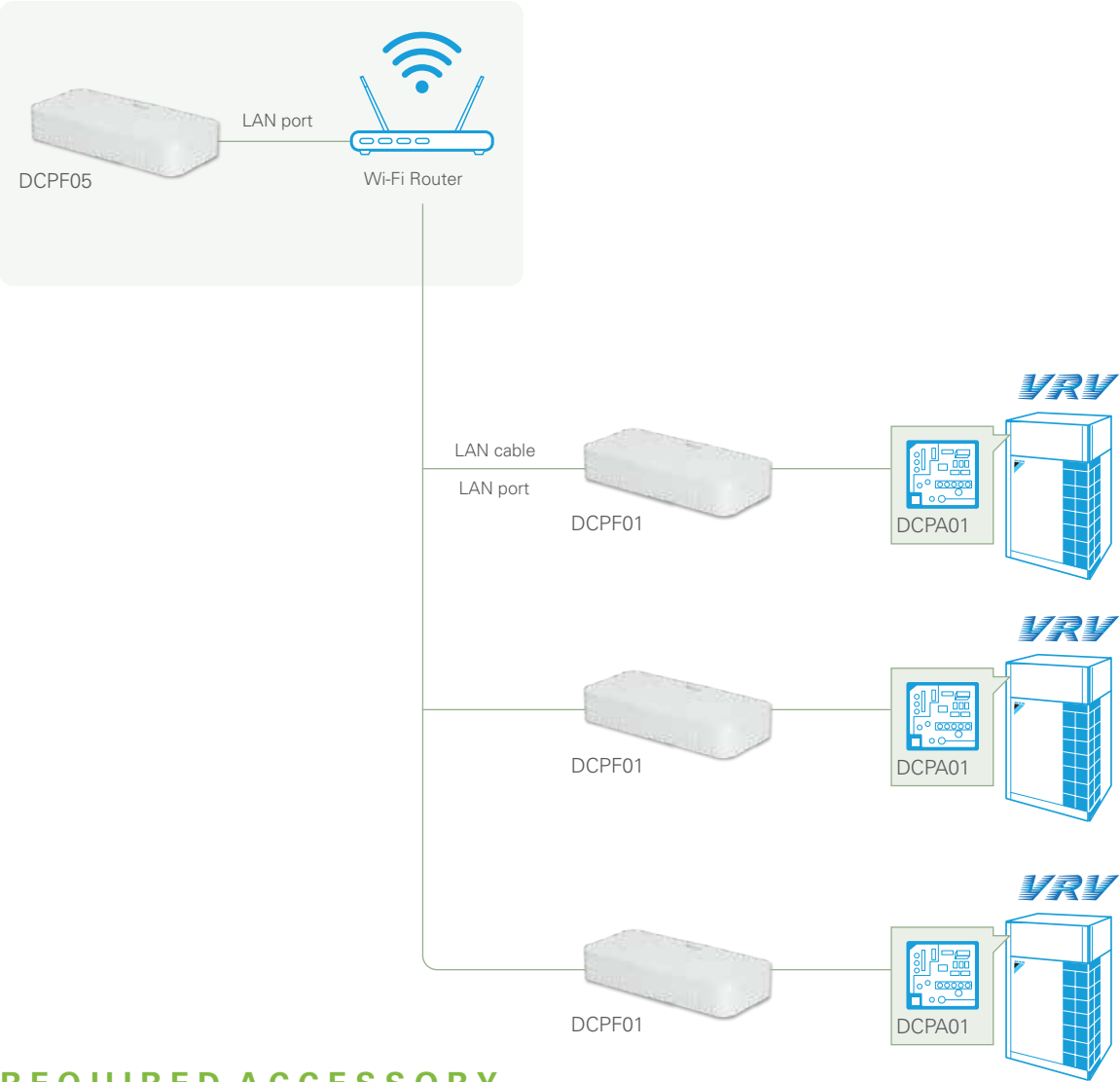
Type	Specification
WAGO I/O System	<p><b>Supported communication modules:</b> 750-362 750-862: for DALI module, Power measurement module</p> <p><b>System modules:</b> 750-600; 750-601; 750-602; 750-613; 753-620 (for DALI module)</p> <p><b>Supported IO modules:</b> Di: 750-400, 430, 432, 436, 1405 Do: 750-504, 513, 513/000-001, 1504 Ai: 750-454, 455, 459, 479, 460, 460/000-003, 460/000-005, 461, 461/000-003, 461/000-004, 461/000-005, 461/020-000 Ao: 750-554, 555, 559, 560 Pulse counter module*: 750-638 DALI: 753-647 Power measurement: 750-495</p> <p><b>Power supply:</b> 787-712; 787-1112</p> <p>*Use with 750-362 only. Not applicable with 750-862.</p>
Modbus Smart Meter	Schneider PM5300 / PM5110 / PM5500 / iEM3100 / iEM3200 series

# CONTROLLER EXTENSION

A dedicated control solution for large scale office buildings through centralised control of multiple Reiri for Office controllers on a single secured and cloud-enabled platform.

## FEATURES & BENEFITS

- Energy Management
- IEQ Management
- Mobile Control of Air-conditioning Units
- Automatic Control
- Scalability
- User-friendly App Interface
- Complete control of all connected devices
- Easy installation and configuration
- Push Notification
- Compliant with Cyber-security standard (EN303645)



## REQUIRED ACCESSORY

### A/C CONNECTION HARDWARE

Type	Model	Item	Remarks
Controller	DCPF01	Reiri for Office	Office building Controller

Category	Functions		Description
Monitoring and Control Functions	Management points		Maximum number of management point: 2500
	Groups		Maximum number of groups: 500
	Monitoring Screen	Icon View	Icons show the operation status of equipment
		Layout View	Maximum 100 screen can be registered; Background image size should be less than 512kB
	Remote Control Prohibition		Individually prohibit operation of each local remote-control function
	Setpoint Range Limitation		To limit setpoint range for each indoor unit management point
Automation Control Functions	Automatic changeover		Number of changeover groups: 500
	Off Timer		Off timer duration can set from 5min to 120min with every 5min interval
	Setback		Setback setpoint can be selected within 24-35°C in cooling mode and 5-20°C in heating mode.
	Scene		Number of programmes: 500 Up to 20 actions can be registered per pattern.
	Schedule	Number of programmes: 500 Up to 20 actions can be registered per pattern.	
		Weekly Schedule	Up to 300 patterns (including yearly calendar) can be set.
		Yearly Calendar	A pattern set as calendar has high priority than a pattern which is set as day of a week.
Data Management	Interlock		Number of programmes: 500 Up to 10 management points can be registered as activation condition. The delay timer of execution condition can be set within 0-120 mins after the activation conditions are satisfied.
	History		Management point operation, management point status change, management point error/alert message, function execution and system information are recorded for one year.
	Report*		Operation data (latest information and operation report) and error report on daily/monthly basis.
	Trend Graph*		Chart on the environmental changes (e.g. Temperature, Humidity or CO <sub>2</sub> levels) along different points of intervals (6h/12h/24h/48h/7 days/specific period within 7 days)
	Energy Graph*		Bar chart on energy and other meter value, up to 4 energy categories excluding the recycled category.
	Real Time Energy Display		Daily/Monthly real time energy consumption status on screen.
Multi-tenant Management	Power Proportional Distribution (P.P.D.)*		Power Proportional Distribution results available at 60 min interval. Power consumption data for cooling and heating mode are available.
	P.P.D. Billing		Generate Bill for individual tenants by using P.P.D. data, up to 500 tenants with maximum 256 indoor units registered under each tenant. Number of electricity price variation in a day: 5 time zones can be set with different currency. The system supports data output in CSV format, and printout function.
System Setting	Account Management		Access through mobile application/ Web browser. Up to 200 accounts (Admin and User account) can be registered. Screens and operation accessible to general users can be restricted by admin account.
	Security		LAN communication: AES-128-CBC with RSA 2048 Internet communication: TLS 1.2 Account password storage: SHA256 hashing and AES-128-CBC together with other account information Device login password storage: AES-128-CBC
	Supported languages		English, Spanish, Portuguese, Simplified Chinese, Traditional Chinese, Vietnamese, Bahasa (Indonesia), Thai
	Notification		Push notification in cases: 1) Error / alert detected 2) Specified management point started 3) Version update messages
	Email Alert		Malfunction Alert will be sent to preset email account

\*The system supports data output in CSV format.

## OPTIONAL SOFTWARE

Type	Model	Item	Remarks
Controller Software	DCPN003	P.P.D. & Tenant Billing Management	Power Proportional Distribution and billing function for individual controller
	DCPN004	Real-time Energy Monitoring (R.E.M.)	Real Time Energy Display function for individual controller

^Smart Meter required.

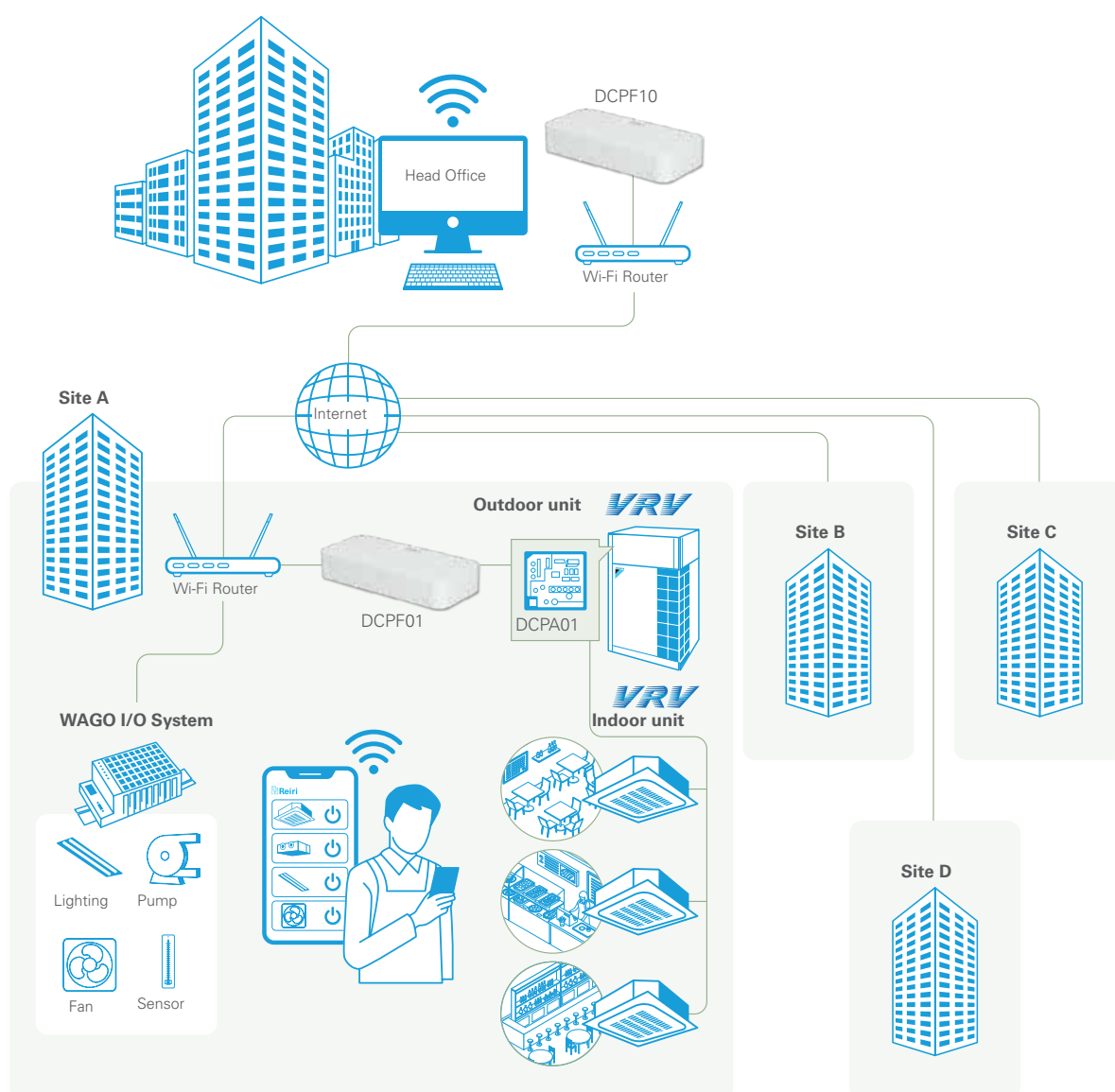
## OPTIONAL ACCESSORIES

# MULTISITE EXTENSION

Centralised control and remote access for all devices in multiple buildings across different locations conveniently located on one secured platform.

## FEATURES & BENEFITS

- Energy Management
- Monitoring of multiple sites at one time
- Individual Management of each site
- Compliant with Cyber-security standard (EN303645)



## REQUIRED ACCESSORY

### A/C CONNECTION HARDWARE

Type	Model	Item	Remarks
Controller	DCPF01	Reiri for Office	Office building Controller

Category	Functions		Description
Monitoring and Control Functions	Management points		Maximum number of management point: 2500
	Sites		Maximum number of sites: 400
	Groups		Maximum number of groups: 100 for each site
	Monitoring Screen	Icon View	Icons show the operation status of equipment
		Layout View	Maximum 50 screen can be registered for each site; Background image size should be less than 512kB
	Remote Control Prohibition		Individually prohibit operation of each local remote-control function
	Setpoint Range Limitation		To limit setpoint range for each indoor unit management point
Automation Control Functions	Automatic changeover		Number of changeover groups: 100 for each site
	Off Timer		Off timer duration can set from 5min to 120min with every 5min interval
	Setback		Setback setpoint can be selected within 24-35°C in cooling mode and 5-20°C in heating mode.
	Scene		Number of programmes: 100 for each site Up to 20 actions can be registered per pattern.
	Schedule	Number of programmes: 100 for each site Up to 20 actions can be registered per pattern.	
		Weekly Schedule	Up to 300 patterns (including yearly calendar) can be set.
		Yearly Calendar	A pattern set as calendar has high priority than a pattern which is set as day of a week.
	Interlock		Number of programmes: 100 for each site Up to 10 management points can be registered as activation condition. The delay timer of execution condition can be set within 0-120 mins after the activation conditions are satisfied.
Data Management	History		Management point operation, management point status change, management point error/alert message, function execution and system information for each site are recorded for one year.
	Report*		Operation data (latest information and operation report) and error report for each site on daily/monthly basis.
	Trend Graph*		Chart on the environmental changes for each site (e.g. Temperature, Humidity or CO <sub>2</sub> levels) along different points of intervals (6h/12h/24h/48h/7 days/specific period within 7 days).
	Energy Graph*		Bar chart on energy and other meter value, up to 4 energy categories excluding the recycled category for each site.
	Real Time Energy Display		Daily/Monthly real time energy consumption status on screen for each site.
Multi-tenant Management	Power Proportional Distribution (P.P.D.)*		Power Proportional Distribution results available at 60 min interval for each site. Power consumption data for cooling and heating mode are available.
	P.P.D. Billing		Generate Bill for individual tenants by using P.P.D. data, up to 256 tenants with maximum 256 indoor units registered under each tenant for each site. Number of electricity price variation in a day: 5 time zones can be set with different currency. The system supports data output in CSV format, and printout function.
System Setting	Account Management		Access through mobile application/ Web browser. Up to 200 accounts (Admin and User account) can be registered. Screens and operation accessible to general users can be restricted by admin account
	Security		LAN communication: AES-128-CBC with RSA 2048 Internet communication: TLS 1.2 Account password storage: SHA256 hashing and AES-128-CBC together with other account information Device login password storage: AES-128-CBC
	Supported languages		English, Spanish, Portuguese, Simplified Chinese, Traditional Chinese, Vietnamese, Bahasa (Indonesia), Thai
	Notification		Push notification in cases: 1) Error/alert detected 2) Specified management point started 3) Version update messages
	Email Alert		Malfunction Alert will be sent to preset email account

\*The system supports data output in CSV format.

^Smart Meter required.

\*Only first 10 sites are free

# OPTIONAL ACCESSORIES

REIRI FOR OFFICE

## OPTIONAL ACCESSORIES

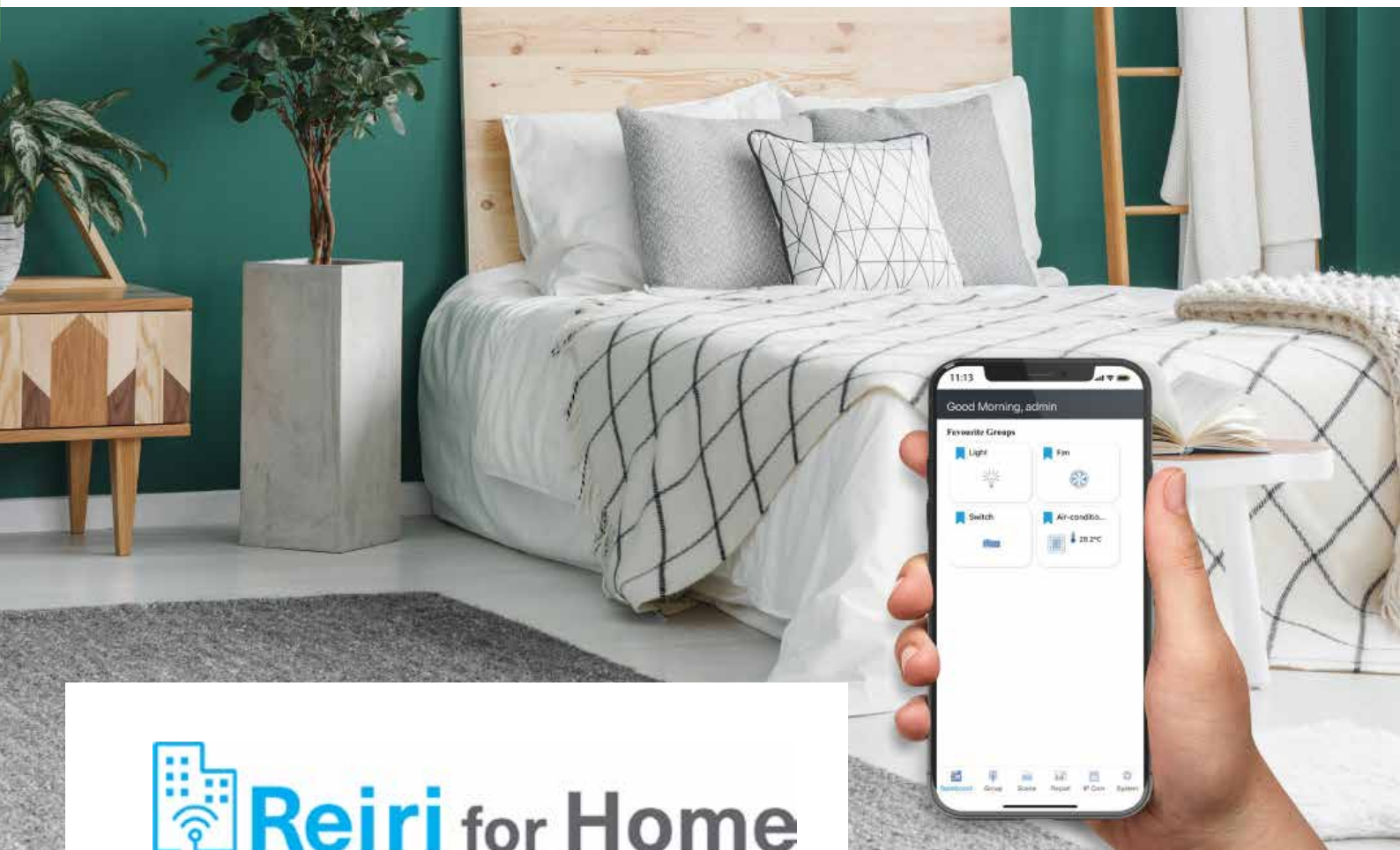
### A/C CONNECTION HARDWARE

Type	Model	Item	Remarks
Controller	DCPF01	Reiri for Office	Office building Controller
	DCPF04	Reiri for Office (Touchscreen Controller)	Office building Controller
	DCPF05	Reiri for Office (Controller Extension)	Office Building Expansion Controller

## OPTIONAL ACCESSORIES

### OPTIONAL SOFTWARE

Type	Model	Item	Remarks
Controller Software	DCPN005	Multi-site Branch Expansion	To expand the multi-site control limit by 1 site



## **Reiri** for Home

**The complete smart home solution for every homeowner, with integration capabilities to allow ease and convenience of control for almost every smart device.**

**Reiri for Home** is the complete smart home solution with seamless integration capabilities, allowing users to control and monitor all smart home devices conveniently from just a single mobile app. From security and safety enhancements to indoor air quality and energy management, Reiri for Home is the ideal home automation system for every homeowner.

### PRODUCT LINE-UP



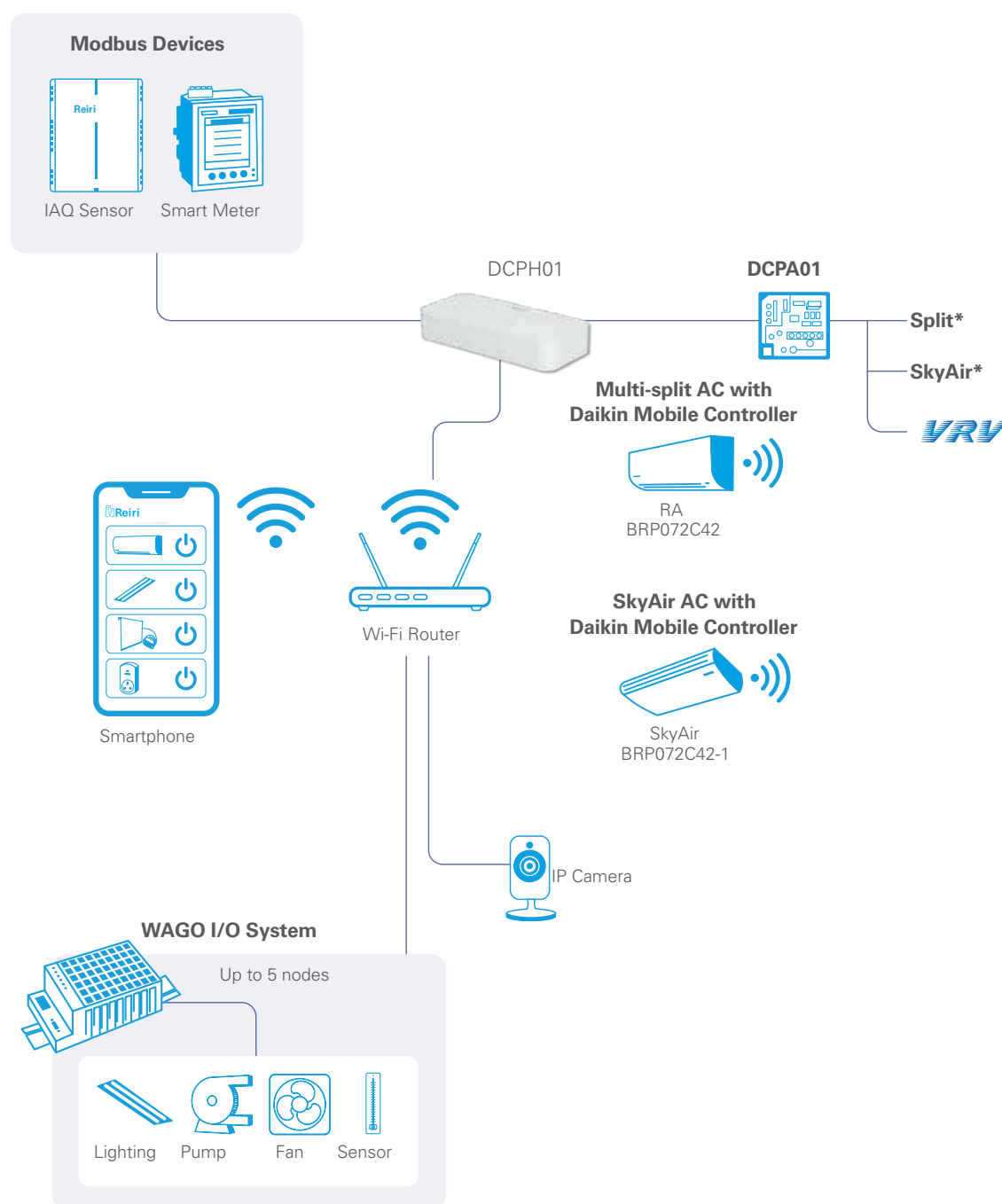
**REIRI FOR HOME**  
DCPH01



**REIRI FOR HOME**  
**LITE VERSION**  
DCPH02

## FEATURES & BENEFITS

- Convenience & Lifestyle
- Energy Management
- IEQ Management
- Home Security Solution
- Google Home enabled
- Mobile Control of Air-conditioning Units
- User-friendly App Interface
- Complete control of all connected devices
- Easy installation and configuration
- Push Notification
- Compliant with Cyber-security standard (EN303645)



Category	Functions	Description
Monitoring and Control Functions	Management points	Maximum number of management point: 100
	Groups	Maximum number of groups: 30
	Monitoring Screens	Icons show the operation status of equipment
	Remote Control Prohibition	Individually prohibit operation of each local remote-control function
	Setpoint Range Limitation	To limit setpoint range for each indoor unit management point
	IP Camera Live View	IP camera live view up to 8 at a same time.
Automation Control Functions	Automatic changeover	Number of changeover groups: 5
	Off Timer	Off timer duration can set from 5min to 120min with every 5min interval
	Setback	Setback setpoint can be selected within 24-35°C in cooling mode and 5-20°C in heating mode.
	Scene	Number of programmes: 30 Up to 20 actions can be registered per pattern.
		Number of programmes: 30 Up to 20 actions can be registered per pattern.
	Schedule	Weekly Schedule      Up to 50 patterns (including yearly calendar) can be set
		Yearly Calendar      A pattern set as calendar has high priority than a pattern which is set as day of a week.
	Interlock	Number of programmes: 30 Up to 10 management points can be registered as activation condition. The delay timer of execution condition can be set within 0-120 mins after the activation conditions are satisfied.
Data Management	History	Management point operation, management point status change, management point error/alert message, function execution and system information are recorded for one year.
	Report*	Operation data (latest information and operation report) and error report on daily/monthly basis.
	Trend Graph*	Chart on the environmental changes (e.g. Temperature, Humidity or CO <sub>2</sub> levels) along different points of intervals (6h/12h/24h/48h/7 days/specific period within 7 days)
	Energy Graph*	Bar chart on energy and other meter value, up to 4 energy categories excluding the recycled category.
System Setting	Account Management	Access through mobile application/ Web browser. Up to 20 accounts (Admin and User account) can be registered. Screens and operation accessible to general users can be restricted by admin account
	Security	LAN communication: AES-128-CBC with RSA 2048 Internet communication: TLS 1.2 Account password storage: SHA256 hashing and AES-128-CBC together with other account information Device login password storage: AES-128-CBC
	Supported languages	English, Spanish, Portuguese, Simplified Chinese, Traditional Chinese, Vietnamese, Bahasa (Indonesia), Thai
	Notification	Push notification in cases: 1) Error/alert detected 2) Specified management point started 3) Version update messages
	Email Alert	Malfunction Alert will be sent to preset email account

### A/C CONNECTION HARDWARE

Type	Model	Item	Remarks
A/C Connection Interface Adaptor	DCPA01	Adaptor for Reiri	Up to 64 indoor units can be managed
	BRP072C42	Daikin Mobile Controller Adaptor (for RA units)	For individual RA Indoor Unit
	BRP072C42-1	Daikin Mobile Controller Adaptor (for SA units)	For individual SA Indoor unit
VRV / SkyAir Connection Interface Adaptor	DTA102A52	Interface adaptor for VRV	For individual VRV Indoor Unit
	DTA112BA51	Interface adaptor for SkyAir	For individual SkyAir Indoor Unit
Residential Unit Connection Interface Adaptor	KRP928BB2S	Interface Adaptor for residential indoor unit	For individual Indoor Unit
Rooftop Unit Connection Interface Adaptor	DTA107A55	Central control adaptor unit	For UAYQ
DIIIDio Connection (ITM)	DEC102A51	Dio Unit	4 ports: use for connection with the equipment of the other companies
DIIIDo Connection (ITM)	DEC101A51	Di Unit	8 ports: use for connection with the equipment of the other companies

### OPTIONAL HARDWARE

Type	Specification
IAQ Sensor for Reiri	DCPE02S (IAQ Sensor DC)

### OPTIONAL SOFTWARE

Type	Model	Item	Remarks
Controller Software	DCPN006	Residential Automatic Control	Setback, Setpoint Range, Remote Control Prohibition, Automatic Changeover functions for individual controller
	DCPN007	Residential System Report	Operation Report, Error Report functions for individual controller

### LOCALLY PROCURED MODULES

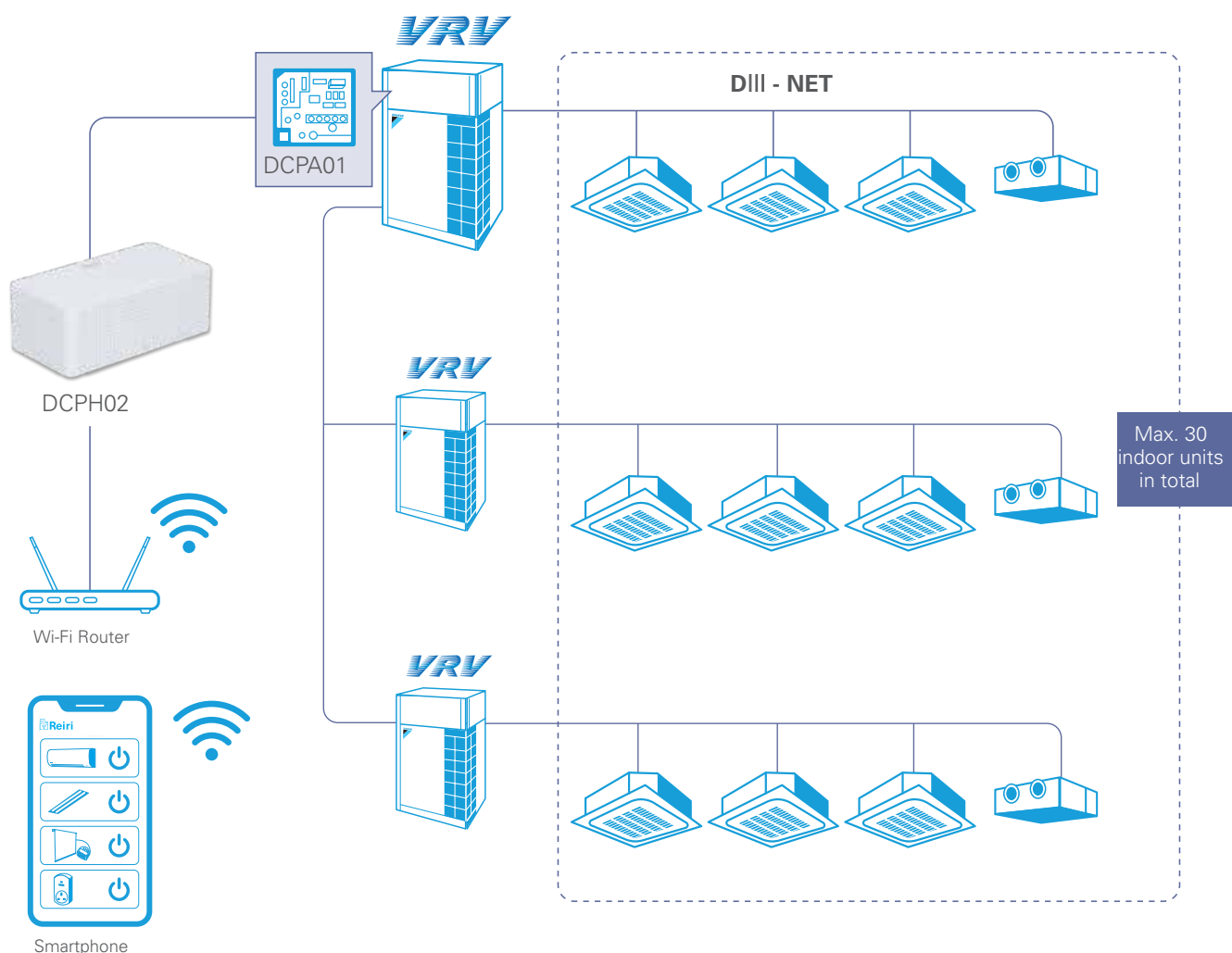
Type	Specification
WAGO I/O System	<p><b>Supported communication modules:</b> 750-362 750-862: for DALI module, Power measurement module</p> <p><b>System modules:</b> 750-600; 750-601; 750-602; 750-613; 753-620 (for DALI module)</p> <p><b>Power supply:</b> 787-712; 787-1112</p> <p><b>Supported IO modules:</b> Di: 750-400, 430, 432, 436, 1405 Do: 750-504, 513, 513/000-001, 1504 Ai: 750-454, 455, 459, 479, 460, 460/000-003, 460/000-005, 461, 461/000-003, 461/000-004, 461/000-005, 461/020-000 Ao: 750-554, 555, 559, 560 Pulse counter module*: 750-638 DALI: 753-647 Power measurement: 750-495</p> <p>*Use with 750-362 only. Not applicable with 750-862.</p>
Modbus Smart Meter	Schneider PM5300 / PM5110 / PM5500 / iEM3100 / iEM3200 series
Compatible IP Cameras	D-Link: DCS-F4602 (dome 2MP), DCS-F4702 (bullet 2MP), DCS-F4604 (dome 4MP), DCS-F4704 (bullet 4MP) [All Hardware Version B] Uniview: IPC21Series, IPC22Series, IPC23Series, IPC24Series, IPC25Series, IPC26Series, IPC31Series, IPC32Series, IPC33Series, IPC35Series, IPC36Series, IPC54Series, IPC56Series, IPC62Series, IPC63Series, IPC64Series, IPC66Series, IPC67Series, IPC68Series, IPC74Series, IPC76Series, IPC81Series, IPC85Series, IPC86Series, IPC2ASeries, IPC2CSeries, TIC22Series, TIC25Series, TIC26Series, TIC76Series

# LITE VERSION

The best smart air-conditioner controller for homeowners to achieve maximum comfort and energy savings.

## FEATURES & BENEFITS

- User-friendly App Interface
- Complete control of all air-conditioners
- Easy installation and configuration
- Push Notification
- Compliant with Cyber-security standard (EN303645)



Category	Functions	Description
Monitoring and Control Functions	Management points	Maximum number of management point: 30
	Groups	Maximum number of groups: 5
	Monitoring Screens	Icons show the operation status of equipment
	Remote Control Prohibition	Individually prohibit operation of each local remote-control function
	Setpoint Range Limitation	To limit setpoint range for each indoor unit management point
Automation Control Functions	Automatic changeover	Number of changeover groups: 5
	Off Timer	Off timer duration can set from 5min to 120min with every 5min interval
	Setback	Setback setpoint can be selected within 24-35°C in cooling mode and 5-20°C in heating mode.
	Schedule	Number of programmes: 10 Up to 20 actions can be registered per pattern.
		Weekly Schedule    Up to 10 patterns (including yearly calendar) can be set.
		Yearly Calendar    A pattern set as calendar has high priority than a pattern which is set as day of a week.
Data Management	History	Management point operation, management point status change, management point error/alert message, function execution and system information are recorded for one year.
	Report*	Operation data (latest information and operation report) and error report on daily/monthly basis.
System Setting	Account Management	Access through mobile application/ Web browser. Up to 10 accounts (Admin and User account) can be registered. Screens and operation accessible to general users can be restricted by admin account.
	Security	LAN communication: AES-128-CBC with RSA 2048 Internet communication: TLS 1.2 Account password storage: SHA256 hashing and AES-128-CBC together with other account information Device login password storage: AES-128-CBC
	Supported languages	English, Spanish, Portuguese, Simplified Chinese, Traditional Chinese, Vietnamese, Bahasa (Indonesia), Thai
	Notification	Push notification in cases: 1) Error/alert detected 2) Specified management point started 3) Version update messages
	Email Alert	Malfunction Alert will be sent to preset email account

## OPTIONAL ACCESSORIES

### A/C CONNECTION HARDWARE

Type	Model	Item	Remarks
A/C Connection Interface Adaptor	DCPA01	Adaptor for Reiri	Up to 64 indoor units can be managed
	BRP072C42	Daikin Mobile Controller Adaptor (for RA units)	For individual RA Indoor Unit
	BRP072C42-1	Daikin Mobile Controller Adaptor (for SA units)	For individual SA Indoor unit
VRV / SkyAir Connection Interface Adaptor	DTA102A52	Interface adaptor for VRV	For individual VRV Indoor Unit
	DTA112BA51	Interface adaptor for SkyAir	For individual SkyAir Indoor Unit
Residential Unit Connection Interface Adaptor	KRP928BB2S	Interface Adaptor for residential indoor unit	For individual Indoor Unit
Rooftop Unit Connection Interface Adaptor	DTA107A55	Central control adaptor unit	For UAYQ

### OPTIONAL SOFTWARE

Type	Model	Item	Remarks
Controller Software	DCPN006	Residential Automatic Control	Setback, Setpoint Range, Remote Control Prohibition, Automatic Changeover functions for individual controller
	DCPN007	Residential System Report	Operation Report, Error Report functions for individual controller

The specifications, designs and information in this brochure are subject to Change without notice. Unit colours shown are as close as possible to actual unit colours. Colours depicted in this brochure may vary slightly.

#### ASSUMPTIONS

All representations made in Daikin marketing and promotional material are based on the assumptions that the correct equipment has been selected, appropriately sized and installed in accordance with Daikin's installation instructions and standard industry practices.

#### QUALITY CERTIFICATIONS

Daikin Industries Ltd was the first air conditioning equipment manufacturer in Japan to receive ISO 9001 certification. All Daikin manufacturing facilities have been certified to ISO 9001 Quality Management System requirements. ISO 9001 is a certificate for quality assurance concerning 'design, development, manufacturing, installation and related service' of products manufactured at that factory.

#### ENVIRONMENTAL CERTIFICATIONS

Daikin Industries Ltd has received ISO 14001 Environmental Certification for the Daikin production facilities listed below. ISO 14001 is an international standard specifying requirement for an environmental management system, enabling an organisation to formulate policy and objectives, taking into account legislative requirements and information about significant environmental impacts. It applies to those environmental aspects within the organisation's control and over which it can be expected to have an influence.

The certification relates only to the environmental management system and does not constitute any endorsement of the products shipped from the facility by the International Organisation for Standardisation.

Head Office / Tokyo Office  
Shiga Plant (Japan)  
Sakai Plant (Japan)  
Daikin Industries (Thailand) Ltd  
Yodogawa Plant (Japan)  
Daikin Australia Pty. Ltd.

Certificate number: EC02J0355  
Certificate number: EC99J2044  
Certificate number: JOA-E-80009  
Certificate number: JOA-E-90108  
Certificate number: EC99J2057  
Certificate number: CEM20437

**Daikin Air Conditioning  
New Zealand Limited  
(ISO 9001)**  
OMS42380  
Auckland



**Residential Air Conditioning  
Manufacturing Div (ISO 9001)**  
JOA-0486 May 2, 1994  
(Shiga Plant)

**Commercial Air Conditioning  
and Refrigeration  
Manufacturing Div (ISO 9001)**  
JMI0107 December 28, 1992  
(Kanaoka Factory and Rinkai  
Factory at Sakai Plant)

**Industrial System and Chiller  
Products Manufacturing Div  
(ISO 9001)**  
JOA-0495 May 16, 1994  
(Yodogawa Plant and Kanaoka  
Factory and Kishiwada Factory)

**Daikin Europe N.V (ISO 9001)**  
Lloyd 928589.1 June 2, 1993

**Daikin Industries (Thailand) Ltd**  
JOA-1452 September 13, 2002  
(ISO 9001)



DAIKIN SPECIALIST

For all sales enquiries email:  
**sales@daikin.co.nz**

For customer service or technical support:  
**0800 209 010**

**daikin.co.nz**