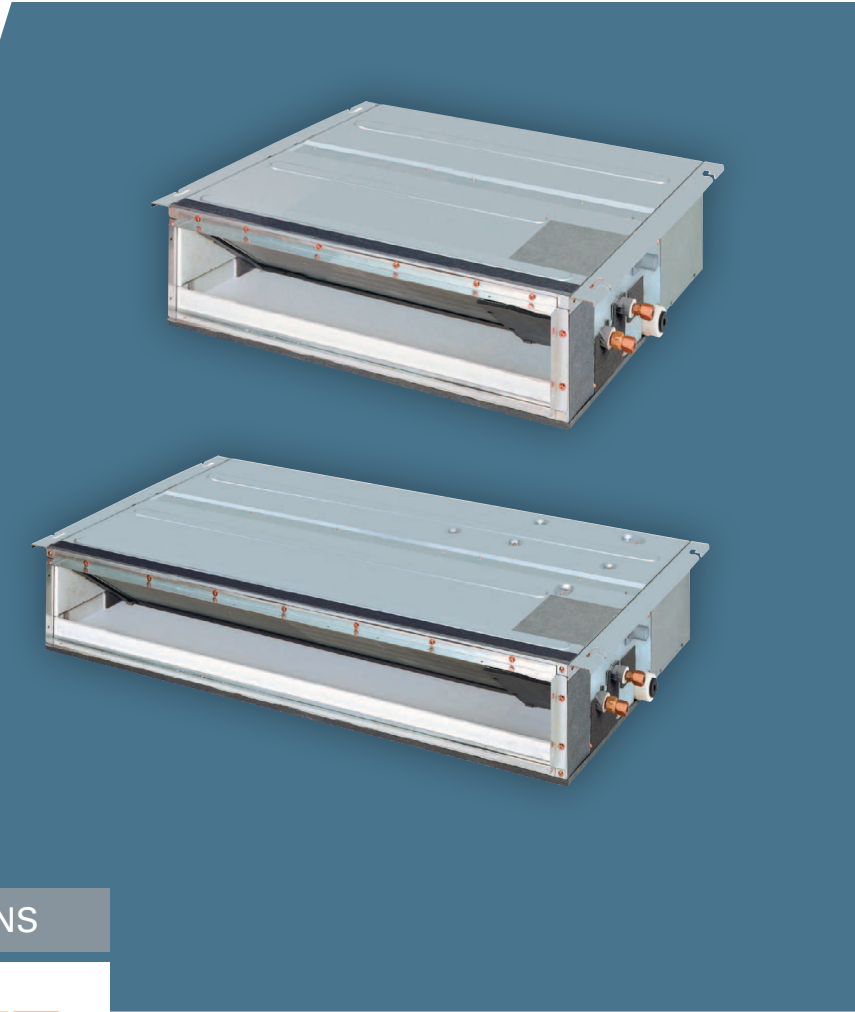




Perfecting the Air

-  **DISCREET DESIGN FOR YOUR SURROUNDING INTERIOR**
-  **COMPACT DESIGN ONLY 200MM IN HEIGHT**
-  **PERFECT FIT FOR COMMERCIAL APPLICATIONS**



HEATING AND COOLING SOLUTIONS

FXDQ-P(N)DVE



SLIM DUCT (STANDARD) TYPE

2.2kW
-TO-
7.1kW
RATED COOLING CAPACITIES

2.5kW
-TO-
8.0kW
RATED HEATING CAPACITIES

6
MODELS

A low profile bulkhead unit with quiet operations that are ideal for installation in drop ceilings with low clearances.

The FXDQ-P(N)DVE series comes with a 3-step fan control & Auto, selectable by remote controller external static pressure and are equipped with a drain pump as standard accessory.



COMFORT

Control of the airflow rate can be selected from 3-step control and Auto. Auto airflow rate control can be selected with wired remote controller.



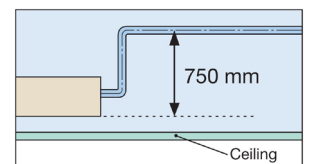
LOW SOUND LEVEL

Low operation sound level: down to 23 dB(A)



DRAIN PUMP ACCESSORY

Drain pump is equipped as standard accessory with 750 mm lift.



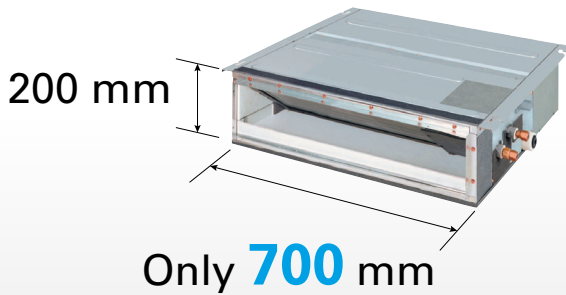


INSTALLATION FLEXIBILITY

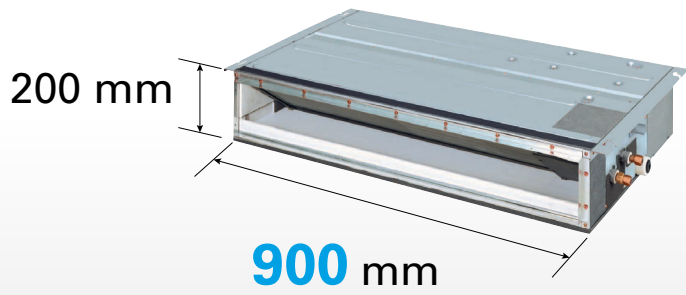
Only 200 mm in height, this model can be installed in rooms with as little as 240 mm in height for the ceiling space between the drop-ceiling and ceiling slab.

Great for
hotel use!

FXDQ20-32PD



FXDQ40/50ND



*1,100 mm in width for the FXDQ63ND model.

SPECIFICATIONS

MODEL		FXDQ20PDVE	FXDQ25PDVE	FXDQ32PDVE	FXDQ40NDVE	FXDQ50NDVE	FXDQ63NDVE
Power Supply		1-phase, 220-240 V/220 V, 50/60 Hz					
Cooling capacity	Btu/h	7,500	9,600	12,300	15,400	19,100	24,200
	kW	2.2	2.8	3.6	4.5	5.6	7.1
Heating capacity	Btu/h	8,500	10,900	13,600	17,100	21,500	27,300
	kW	2.5	3.2	4.0	5.0	6.3	8.0
Power consumption	Cooling	0.086		0.089	0.160	0.165	0.181
	Heating	0.067		0.070	0.147	0.152	0.168
Casing		Galvanised steel plate					
Airflow rate (HH/H/L)	l/s	133/120/106			175/158/141	208/183/166	275/241/216
	m ³ /min	8.0/7.2/6.4			10.5/9.5/8.5	12.5/11.0/10.0	16.5/14.5/13.0
External static pressure	Pa	30-10 ⁻²			44-15 ⁻²		
Sound level (HH/H/L) *1*3	dB(A)	28/26/23		28/26/24	30/28/26	33/30/27	33/31/29
Sound power (HH/H/L)	dB(A)	56/54/51		56/54/52	58/56/54	61/58/55	61/59/57
Dimensions (HxWxD)	mm	200×700×620			200×900×620		200×1,100×620
Machine weight	kg	23			27	28	31
Piping connections	Liquid (Flare)	φ 6.4					φ 9.5
	Gas (Flare)	φ 12.7					φ 15.9
	Drain	VP20 (external Dia. 26 / Internal Dia. 20)					

Notes: Specifications are based on the following conditions;

- Cooling: Indoor temp.: 27°CDB, 19°CWB, Outdoor temp.: 35°CDB, Equivalent piping length: 7.5 m, Level difference: 0 m.
- Heating: Indoor temp.: 20°CDB, Outdoor temp.: 7°CDB, 6°CWB, Equivalent piping length: 7.5 m, Level difference: 0 m.
- Capacity of indoor unit is only for reference. Actual capacity of indoor unit is based on the total capacity index. (See Engineering Data Book for details.)
- Sound level: Anechoic chamber conversion value, measured at a point 1.5 m downward from the unit centre. During actual operation, these values are normally somewhat higher as a result of ambient conditions.

- *1: Values are based on the following conditions: FXDQ-PD: external static pressure of 10 Pa; FXDQ-ND: external static pressure of 15 Pa.
- *2: External static pressure is changeable to set by the remote controller. This pressure means "High static pressure - Standard". (Factory setting is 10 Pa for FXDQ-PD models and 15 Pa for FXDQ-ND models.)
- *3: The values of operation sound level represent those for rear-suction operation. Sound level values for bottom-suction operation can be obtained by adding 5 dB(A).

Your Local Daikin Specialist Dealer:



daikin.co.nz