



Perfecting the Air

- ADVANCED SENSING SENSOR MODE**
- LEADING STREAMER TECHNOLOGY**
- COMFORT AND ENERGY SAVING**
- PERFECT FIT FOR OFFICE OR COMMERCIAL APPLICATION**



HEATING AND COOLING SOLUTIONS

FXFTQ-AVM

ROUND FLOW CASSETTE WITH SENSING AND STREAMER TYPE

2.8kW
-TO-
16.0kW
RATED COOLING CAPACITIES

3.2kW
-TO-
16.0kW
RATED HEATING CAPACITIES

9
MODELS

Comfort, energy savings by sensing and enhanced maximum efficiency in cleaning.

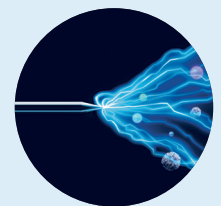
Introducing Streamer technology to VRV Indoor unit.

Daikin Streamer Technology enhances maximum efficiency in cleaning, which uses powerful decomposition properties to decompose substances captured by filter for better air quality.

DAIKIN'S STREAMER TECHNOLOGY

FXFTQ-AVM

STREAMER TECHNOLOGY



Irradiate streamers when the fan and air conditioning operation is stopped. The streamer fumigates the cabin and sterilizes the filter.

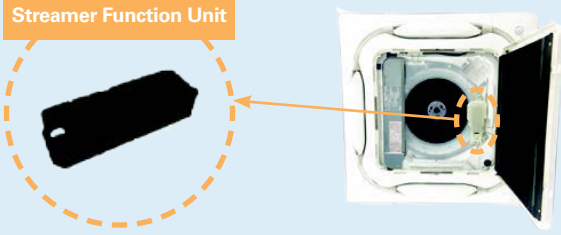


STREAMER TECHNOLOGY

Streamer function unit is built-in inside the indoor unit for efficient cleaning function.

NEW

Streamer Function Unit



Remarks:

1. Only the remote controller BRC1H62W(K) can be connected for ON/OFF operation of the streamer.
2. Streamer function operates when the fan stops after the air conditioning operation is stopped. The maximum operation of streamer is 180 minutes per day. (This function is available only when the remote controller BRC1H62W(K) is connected.)



Stylish Remote Controller BRC1H62W(K)

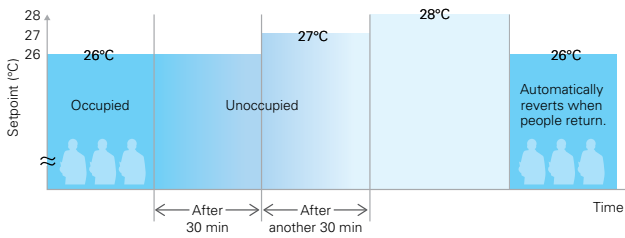


SENSING SENSOR MODE (ENERGY SAVING)

When there are no people in a room, the set temperature is shifted automatically.

Example

- Cooling setpoint: 26°C
- Shift temperature: 1.0°C
- Shift time: 30 min.
- Limit cooling temperature: 30°C



SENSING SENSOR STOP MODE (DEFAULT: OFF)

Based on preset user conditions, the system automatically stops operation if the room is unoccupied.

*Adjustment is possible for shift time and set temperature by local setting.



INDIVIDUAL AIRFLOW DIRECTION CONTROL

Airflow direction can be individually adjusted for each air discharge outlet to deliver optimal air distribution.



AUTO AIRFLOW FUNCTION (COMFORT)

When human is not detected for 5 minutes, the unit automatically returns to controlling the flaps for an unoccupied room. (Direct Airflow function, Draft Prevention function)

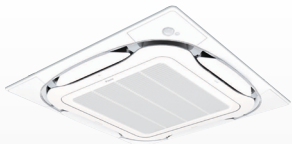


EASY INSTALLATION

Drain pump is equipped as standard accessory with 850mm lift.

PANEL (OPTION)

Standard panel



Standard panel with sensing
BYCQ125EEF (Fresh White)



Standard panel with sensing
BYCQ125EEK (Black)

Standard panel with sensing	Model		BYCQ125EEF (Fresh White)
	Dimensions (HxWxD)	mm	50×950×950
	Weight	kg	5.5
	Model		BYCQ125EEK (Black)
Dimensions (HxWxD)	mm	50×950×950	
Weight	kg	5.5	

*1. These panels do not contain the sensing function.

HIGH PERFORMANCE PREFILTER (MERV 8) (OPTION)*

This filter can catch more harmful substances in the air such as PM2.5.

* Only applicable to standard panel with sensing. (BYCQ125EEF/K)



BAF552A160

NEW

FUNCTION LIST

Remote controller	Wired
	BRC1H62W(K)
Streamer function unit	✓
Auto airflow function (Draft prevention)*1	✓
Dual sensors *1	✓
Sensing sensor stop mode *1	✓
Individual airflow direction control	✓
Switchable 5 step fan	✓
Auto airflow rate	✓
Auto swing	✓
Sensing sensor low mode *1	✓
High ceiling application	✓

*1. Applicable when sensing panel is installed.



SPECIFICATIONS

MODEL		FXFTQ25AVM	FXFTQ32AVM	FXFTQ40AVM	FXFTQ50AVM	FXFTQ63AVM	FXFTQ80AVM	FXFTQ100AVM	FXFTQ125AVM	FXFTQ140AVM
Power Supply		1-phase, 220-240 V/220-230 V, 50/60 Hz								
Cooling capacity	Btu/h	9,600	12,300	15,400	19,100	24,200	30,700	38,300	47,800	54,600
	kW	2.8	3.6	4.5	5.6	7.1	9.0	11.2	14.0	16.0
Heating capacity	Btu/h	10,900	13,600	17,100	21,500	27,300	34,100	42,700	54,600	
	kW	3.2	4.0	5.0	6.3	8.0	10.0	12.5	16.0	
Power consumption	Cooling	0.028		0.035	0.056	0.061	0.092	0.164	0.170	0.194
	Heating	0.026		0.034	0.056	0.060	0.092	0.144	0.159	0.183
Casing		Galvanised steel plate								
Airflow rate (H/HM/M/ML/L)	ℓ/s	217/208/192/183/167		263/225/208/200/183	383/342/317/242/183	392/350/333/267/225	408/367/342/333/250	558/508/450/392/350	575/525/475/425/383	592/542/492/442/383
	m ³ /min	13/12.5/11.5/11/10		17/13.5/12.5/12/11	23/20.5/19/14.5/11	23.5/21/20/16/13.5	24.5/22/20.5/20/15	33.5/30.5/27/23.5/21	34.5/31.5/28.5/25.5/23	35.5/32.5/29.5/26.5/23
Sound level (H/HM/M/ML/L)	dB(A)	30/29.5/28.5/28/27		35/29.5/29/28/27	38/35/34.5/29.5/27	38/36/35.5/31.5/28	39/37/36/35.5/31	44/41/38/35/33	45/42.5/39.5/37/35	46/43.5/40.5/38/35
Dimensions (HxWxD)	mm	256x840x840						298x840x840		
Machine weight	kg	19			24	22		25		26
Piping connections	Liquid (Flare)	Ø 6.4				Ø 9.5				
	Gas (Flare)	Ø 12.7				Ø 15.9				
	Drain	VP25 (External Dia. 32/Internal Dia. 25)								

- Notes:** Specifications are based on the following conditions;
- Cooling: Indoor temp.: 27°CDB, 19°CWB, Outdoor temp.: 35°CDB, Equivalent piping length: 7.5 m, Level difference: 0 m.
 - Heating: Indoor temp.: 20°CDB, Outdoor temp.: 7°CDB, 6°CWB, Equivalent piping length: 7.5 m, Level difference: 0 m.

- Capacity of indoor unit is only for reference. Actual capacity of indoor unit is based on the total capacity index. (See Engineering Data Book for details.)
- Sound level: Anechoic chamber conversion value, measured at a point 1.5 m downward from the unit centre.
- During actual operation, these values are normally somewhat higher as a result of ambient conditions.

Your Local Daikin Specialist Dealer: