



Perfecting the Air

WIDE-REACHING AIRFLOW

POWERFUL OPERATION

PERFECT FIT FOR OFFICE OR COMMERCIAL APPLICATION



FXHQ32 / 63 / 100MA



FXHQ125 / 140A

HEATING AND COOLING SOLUTIONS

FXHQ-MAVE/AVM



CEILING SUSPENDED TYPE

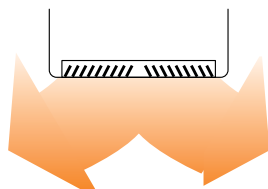
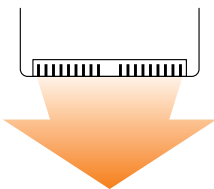
A single flow underceiling unit with a slim body, quiet operation and wide airflow for superior in room comfort.

The FXHQ-MAVE/AVM series are single flow under ceiling units that provide quiet, wide angle airflow via its Quiet Stream Fan technology and suited for installation in elongated spaces.



COMFORT

- Auto swing (up and down) and louvers (left and right by hand) bring comfort to the room.
- Switchable fan speed: 2-steps airflow rate control for FXHQ-MAVE models and 3-steps for FXHQ-AVM models
- Louver manually adjusts for straight or wide angle airflow.



3.6kW
-TO-
15.5kW
RATED COOLING CAPACITIES

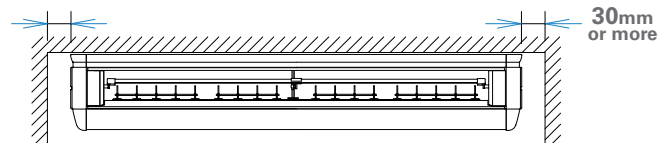
4.0kW
-TO-
17.0kW
RATED HEATING CAPACITIES

7
MODELS



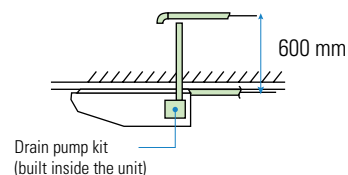
FLEXIBLE INSTALLATION

- The units fits more snugly into tight spaces.



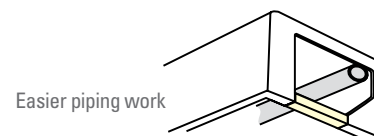
*Water used in the test-run can be drained from the air discharge opening rather than from the side as was formerly the case.

- Drain pump kit (option) can be easily incorporated. Drain pipe connection can be done inside the unit. Refrigerant and drain pipe outlets are at the same opening.



Drain pump kit (built inside the unit)

- All wiring and internal servicing can be done from under the unit.
- The rear side removable frame allows ease of access for piping work.



Easier piping work



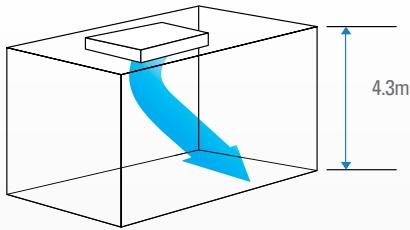
DESIGN FLEXIBILITY

125/140 MODELS PROVIDE GREATER CAPACITY FOR LARGE SPACES

- The technology of the DC fan motor, wide sirocco fan, and large heat exchanger combine for greater airflow and quiet operation.
- Sophisticated design: Flap neatly closes when not in use.



- Suitable for high ceilings: maximum 4.3 m



- Drain pump kit (option) includes a silver ion antibacterial agent that assists in preventing the growth of slime, bacteria, and mould that cause smells and clogging.



SPECIFICATIONS

MODEL		FXHQ32MAVE	FXHQ50MAVE	FXHQ63MAVE	FXHQ80MAVE	FXHQ100MAVE	FXHQ125AVM	FXHQ140AVM	
Power Supply		1-phase, 220-240 V/220 V, 50/60 Hz				1-phase, 220-240 V/220-230 V, 50/60 Hz			
Cooling Capacity	Btu/h	12,300	19,100	24,200	30,700	38,200	48,00	52,900	
	kW	3.6	5.6	7.1	9.0	11.2	14.1	15.5	
Heating Capacity	Btu/h	13,600	21,500	27,300	34,100	42,700	54,600	58,000	
	kW	4.0	6.3	8.0	10.0	12.5	16.0	17.0	
Power Consumption	Cooling	kW	0.111	0.100	0.115	0.126	0.135	0.168	0.181
	Heating		0.111	0.100	0.115	0.126	0.135	0.168	0.181
Casing		Sheet Metal / White (10Y9/0.5)				Sheet Metal / White			
Airflow rate (H/M/L)	ℓ/s	200/-/166	250/-/200	291/-/233	392/-/283	416/-/325	567/433/333	600/450/333	
	m³/min	12/-/10	15/-/12	17.5/-/14	23.5/-/17	25/-/19.5	34/26/20	36/27/20	
Sound level (H/M/L)	dB(A)	36/-/31	37/-/32	39/-/34	43/-/37	45/-/37	46/41/37	48/42/37	
Dimensions [without stands] (HxWxD)	mm	195×960×680	195×1,160×680		195×1,400×680		235×1,590×690		
Machine Weight	kg	24	28		33		41		
Piping Connections	Liquid (Flare)	mm	φ 6.4			φ 9.5			
	Gas (Flare)		φ 12.7			φ 15.9			
	Drain		VP20 (External Dia. 26/Internal Dia. 20)						

Notes:

- Specifications are based on the following conditions;
 - Cooling: Indoor temp.: 27°CDB, 19°CWB, Outdoor temp.: 35°CDB, Equivalent piping length: 7.5 m, Level difference: 0 m.
 - Heating: Indoor temp.: 20°CDB, Outdoor temp.: 7°CDB, 6°CWB, Equivalent piping length: 7.5 m, Level difference: 0 m.
- Capacity of indoor unit is only for reference. Actual capacity of indoor unit is based on the total capacity index. (See Engineering Data Book for details.)
- Sound level: Anechoic chamber conversion value, measured at a point 1 m in front of the unit and 1 m downward.
- During actual operation, these values are normally somewhat higher as a result of ambient conditions.

Your Local Daikin Specialist Dealer:



daikin.co.nz